




Company name:

Created by:

Phone:

Date:

Position	Qty.	Description																														
	1	<div><div>Unilift CC 5</div><div></div><div><div>Note! Product picture may differ from actual product</div><div>Product No.: 96280966</div><div><p>Grundfos Unilift CC pumps are single-stage submersible pumps with a low suction ability down to 3 mm water level.</p><p>The pumps are designed for pumping rainwater and grey wastewater, e.g. from •washing machines, baths, sinks, etc. from low-lying parts of buildings up to sewer level •cellars or buildings prone to flooding •draining wells •wells for surface water with inlets from roof gutters, pits, tunnels, etc. •swimming pools, ponds or fountains.</p><p>The pumps are suitable for both stationary and portable use. They are for automatic operation. The pumps allow free passage of particles up to 10 mm.</p><p>The motor incorporates automatic overload protection cutting out the motor in case of overload. When cooled to normal temperature, the motor restarts automatically.</p><p>Technical:</p><table><tr><td>Maximum particle size:</td><td>10 mm</td></tr></table><p>Materials:</p><table><tr><td>Pump housing:</td><td>PP 15 GF</td></tr><tr><td>Impeller:</td><td>PPOm 20 GF</td></tr></table><p>Installation:</p><table><tr><td>Pump outlet:</td><td>1.1/4"</td></tr><tr><td>Maximum installation depth:</td><td>10 m</td></tr></table><p>Liquid:</p><table><tr><td>Liquid temperature range:</td><td>0 .. 40 ºC</td></tr></table><p>Electrical data:</p><table><tr><td>C run:</td><td>4 I F</td></tr><tr><td>Mains frequency:</td><td>50 Hz</td></tr><tr><td>Rated voltage:</td><td>1 x 220-240 V</td></tr><tr><td>Rated current:</td><td>0.98 A</td></tr><tr><td>Capacitor size - run:</td><td>4 I F/450 V</td></tr><tr><td>Enclosure class (IEC 34-5)::</td><td>IP68</td></tr><tr><td>Insulation class (IEC 85):</td><td>B</td></tr><tr><td>Length of cable:</td><td>10 m</td></tr><tr><td>Type of cable plug:</td><td>SCHUKO</td></tr></table><p>Others:</p></div></div></div>	Maximum particle size:	10 mm	Pump housing:	PP 15 GF	Impeller:	PPOm 20 GF	Pump outlet:	1.1/4"	Maximum installation depth:	10 m	Liquid temperature range:	0 .. 40 ºC	C run:	4 I F	Mains frequency:	50 Hz	Rated voltage:	1 x 220-240 V	Rated current:	0.98 A	Capacitor size - run:	4 I F/450 V	Enclosure class (IEC 34-5)::	IP68	Insulation class (IEC 85):	B	Length of cable:	10 m	Type of cable plug:	SCHUKO
Maximum particle size:	10 mm																															
Pump housing:	PP 15 GF																															
Impeller:	PPOm 20 GF																															
Pump outlet:	1.1/4"																															
Maximum installation depth:	10 m																															
Liquid temperature range:	0 .. 40 ºC																															
C run:	4 I F																															
Mains frequency:	50 Hz																															
Rated voltage:	1 x 220-240 V																															
Rated current:	0.98 A																															
Capacitor size - run:	4 I F/450 V																															
Enclosure class (IEC 34-5)::	IP68																															
Insulation class (IEC 85):	B																															
Length of cable:	10 m																															
Type of cable plug:	SCHUKO																															



Company name:

Created by:

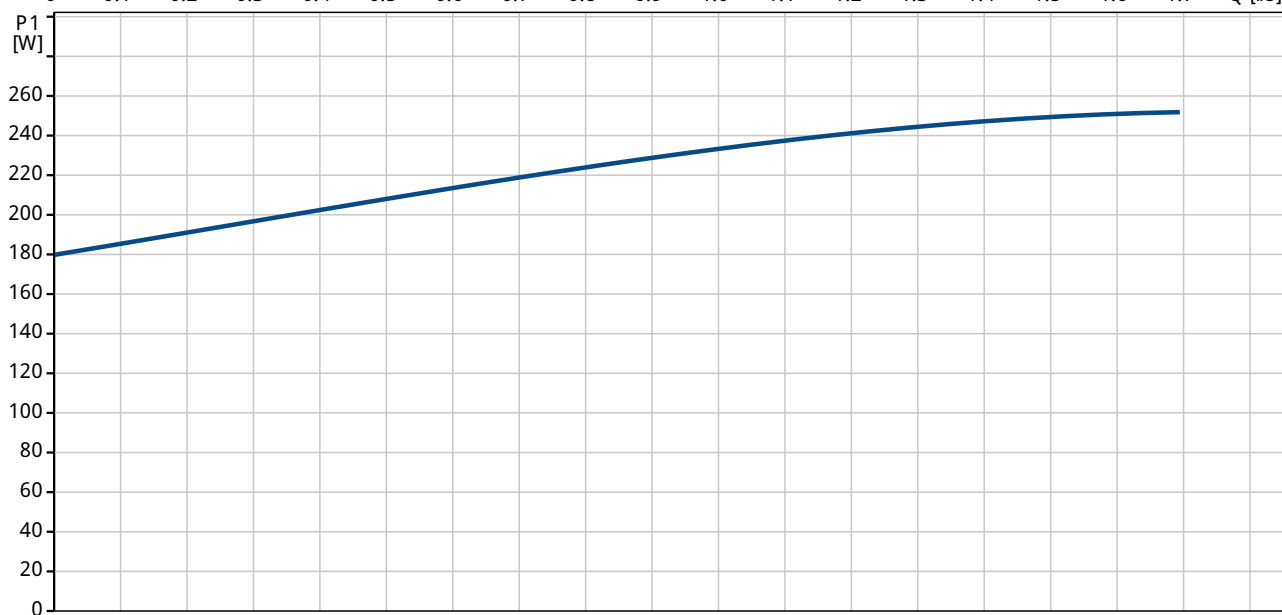
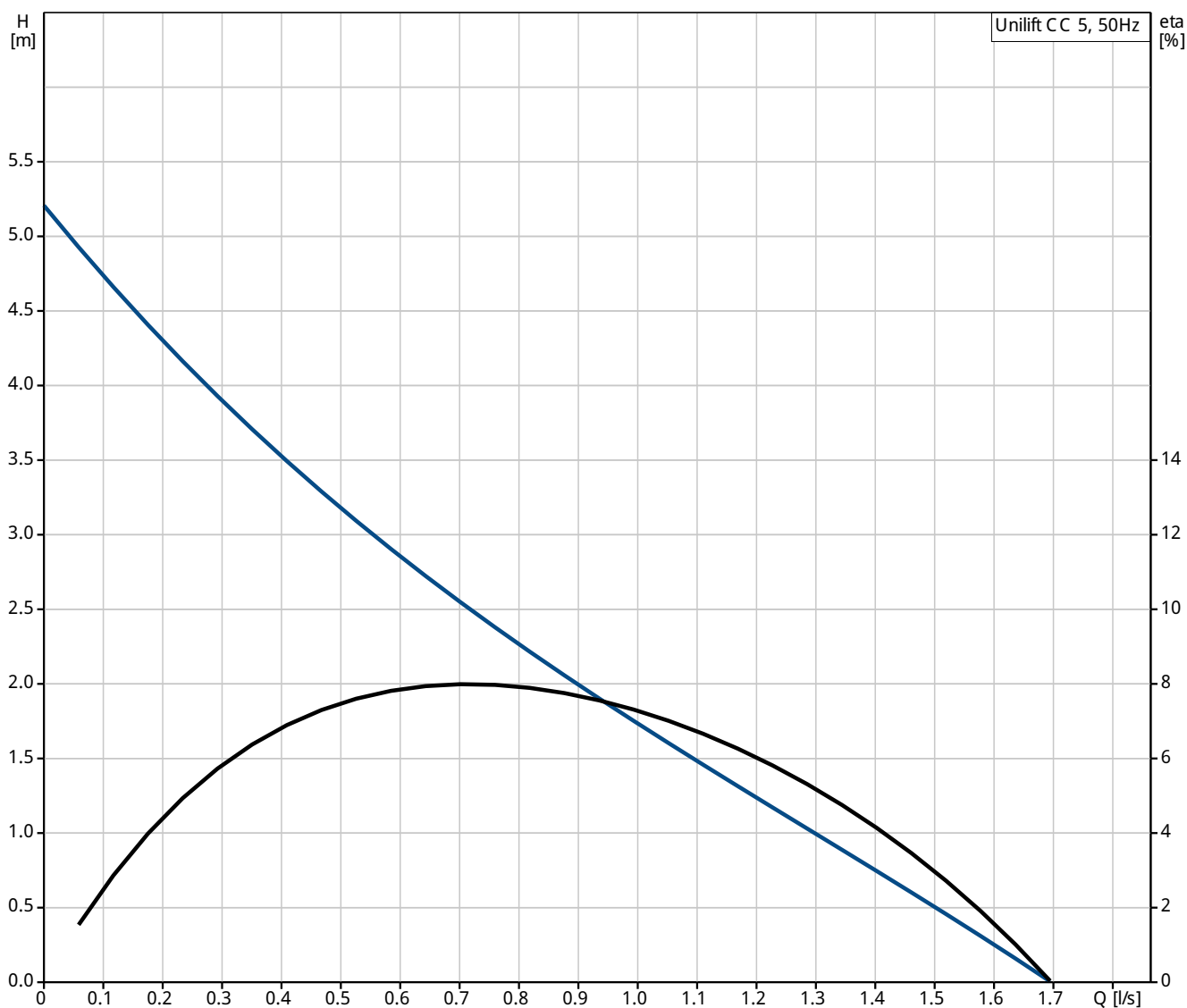
Phone:

Date:

Position	Qty.	Description
		Net weight: 4.51 kg
		Gross weight: 5.27 kg
		Shipping volume: 0.168 mE



96280966 Unilift CC 5 50 Hz



Description	Value
-------------	-------

General information:

Product name:	Unilift CC 5
Position	
Product No:	96280966
EAN number:	5700830761366
Price:	On request

Technical:

Max flow:	1.67 l/s
Head max:	5 m
Maximum particle size:	10 mm

Materials:

Pump housing:	PP 15 GF
Impeller:	PPOm 20 GF

Installation:

Pump outlet:	1.1/4"
Maximum installation depth:	10 m

Liquid:

Liquid temperature range:	0 .. 40 °C
---------------------------	------------

Electrical data:

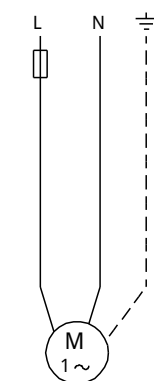
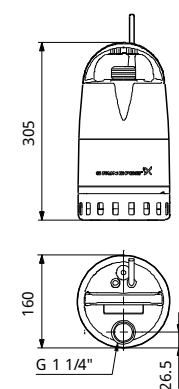
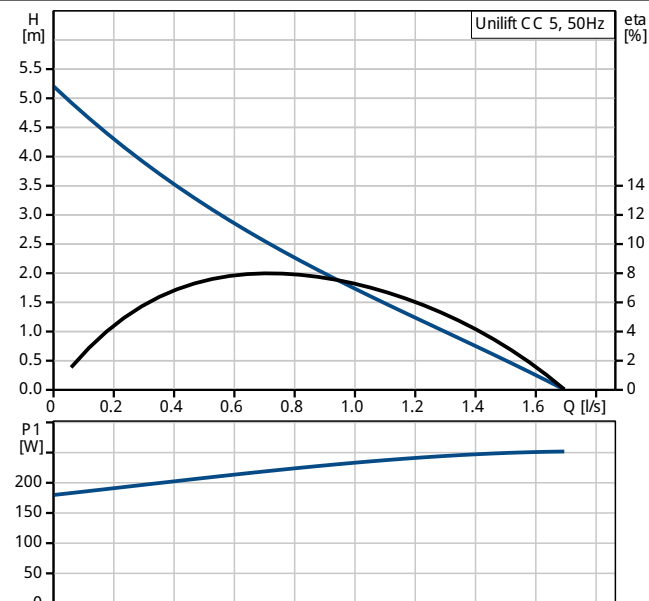
C run:	4 i F
Mains frequency:	50 Hz
Rated voltage:	1 x 220-240 V
Rated current:	0.98 A
Capacitor size - run:	4 i F/450 V
Enclosure class (IEC 34-5)::	IP68
Insulation class (IEC 85):	B
Motor protec:	YES
Length of cable:	10 m
Type of cable plug:	SCHUKO

Controls:

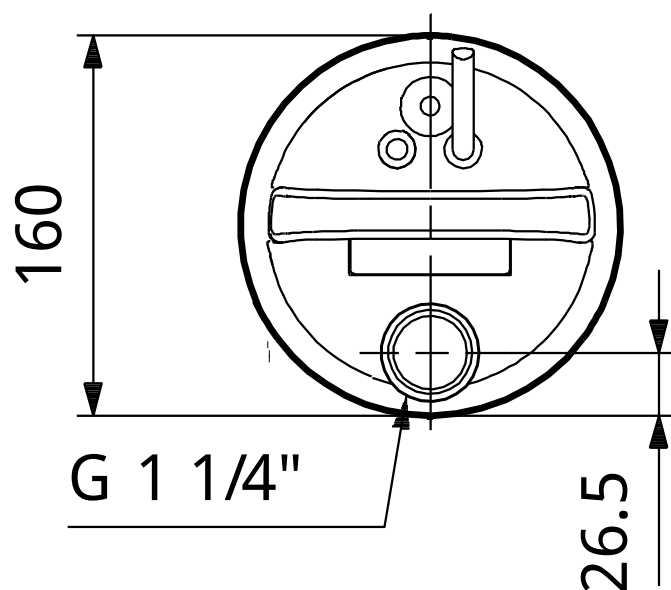
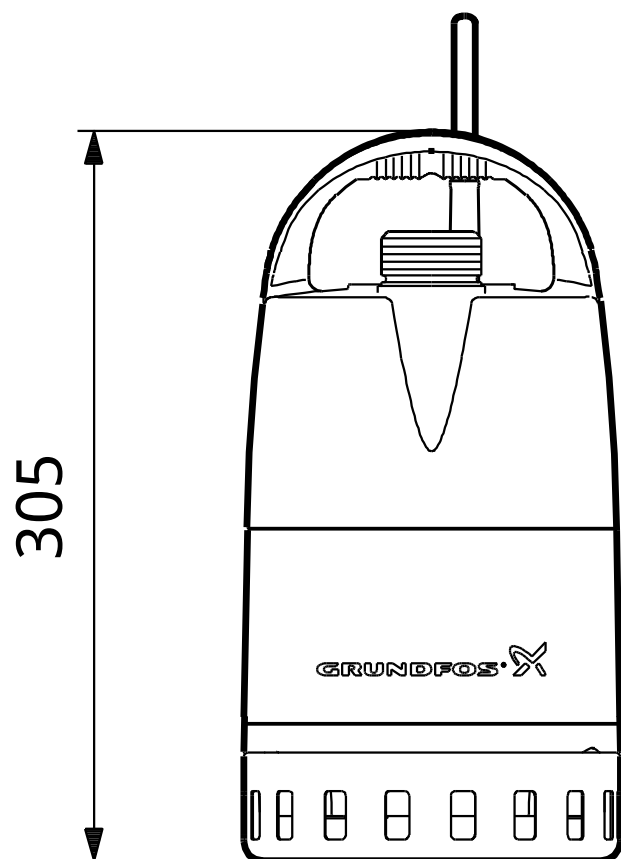
Level switch:	float switch
---------------	--------------

Others:

Net weight:	4.51 kg
Gross weight:	5.27 kg
Shipping volume:	0.168 mE



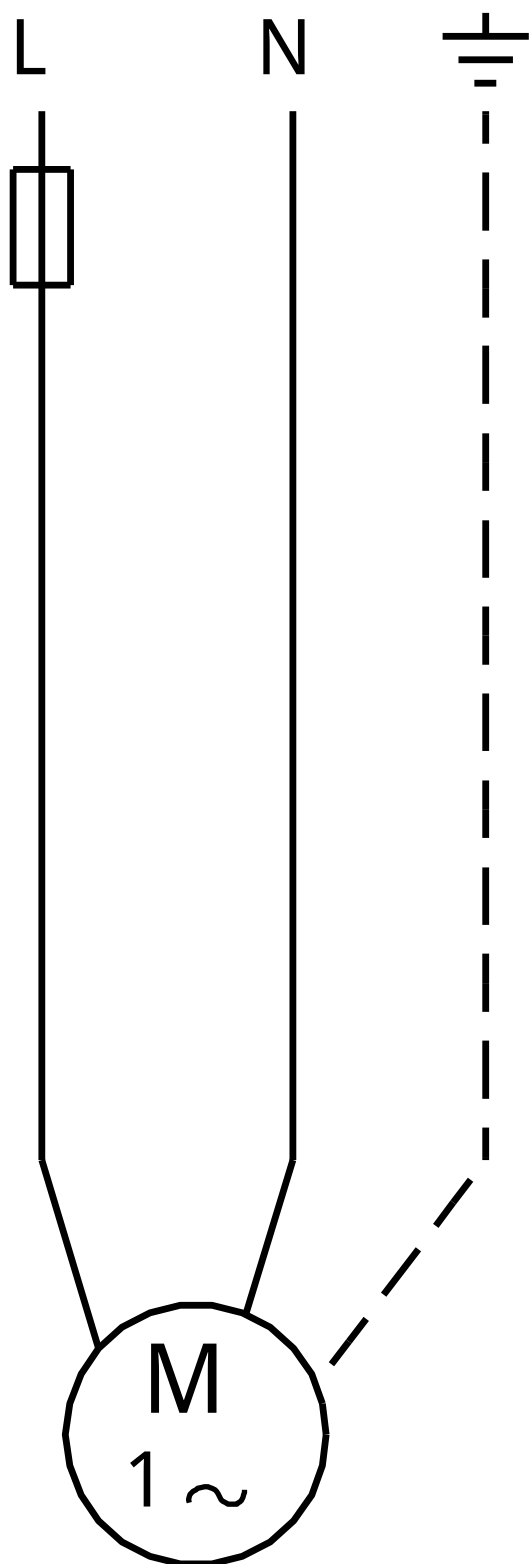
96280966 Unilift CC 5 50 Hz



Note! All units are in [mm] unless others are stated.
Disclaimer: This simplified dimensional drawing does not show all details.



96280966 Unilift CC 5 50 Hz



Note! All units are in [mm] unless others are stated.