
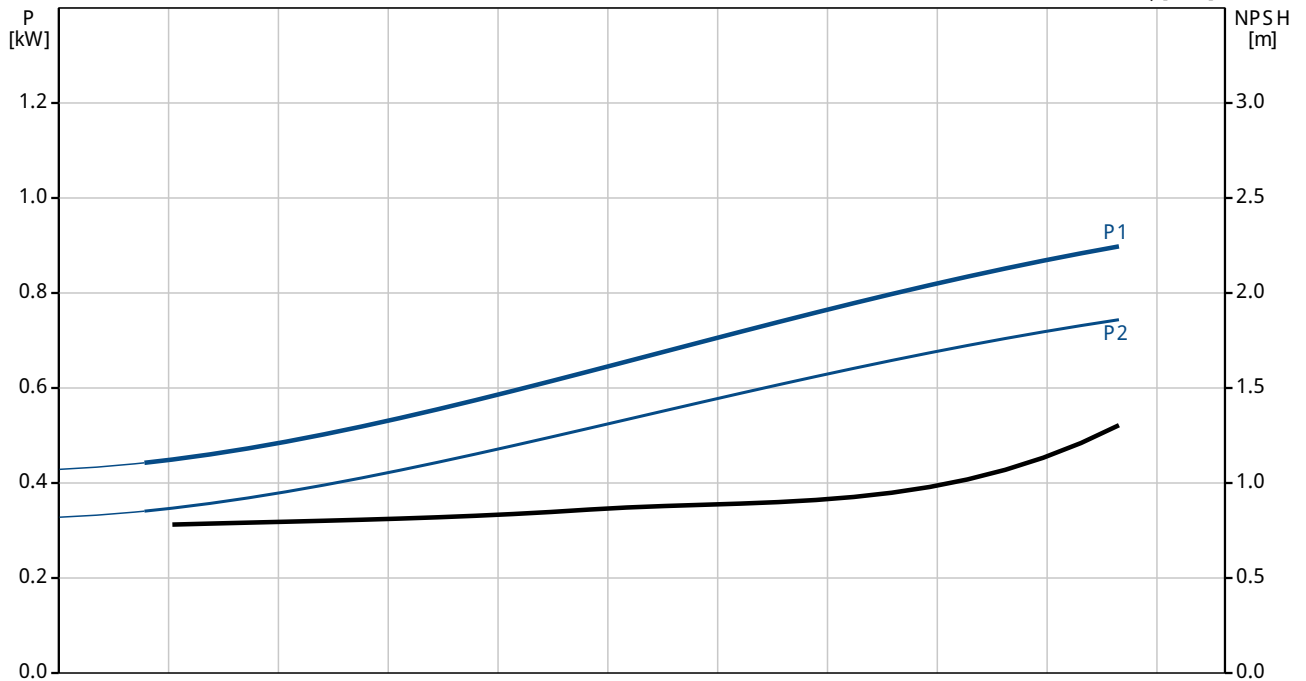
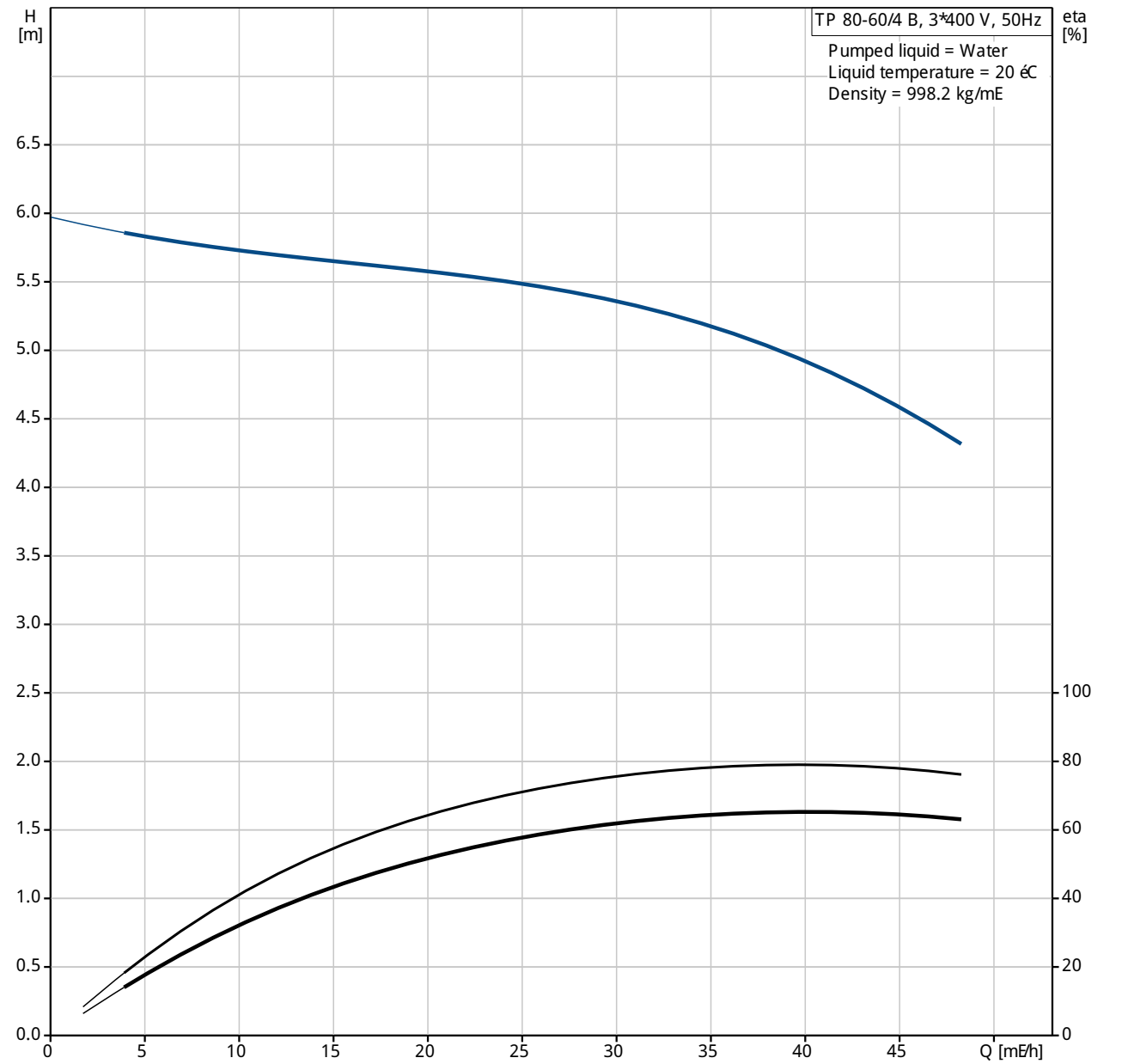


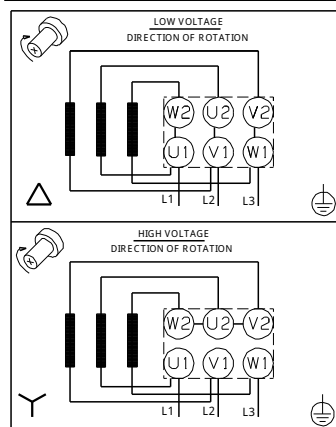
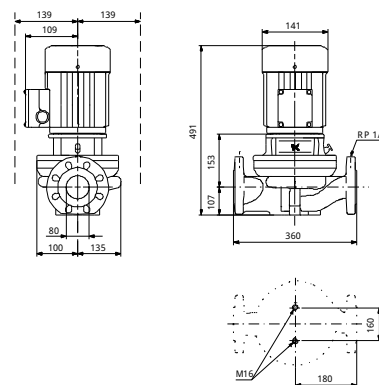
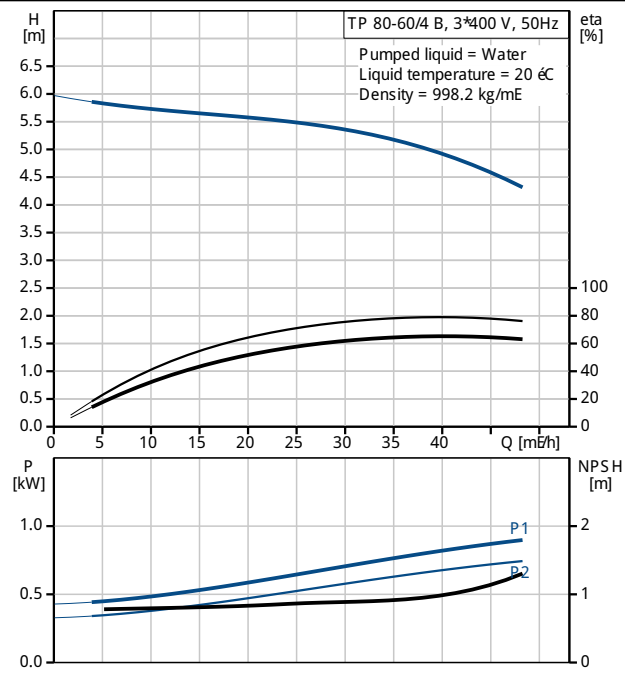
Position	Qty.	Description
	1	<p>TP 80-60/4 B A-F-Z-BUBE</p>  <p>Note! Product picture may differ from actual product</p> <p>Product No.: 96402434</p> <p>Single-stage centrifugal volute in-line single-head pump:</p> <ul style="list-style-type: none"> - neck rings and impeller made of stainless steel - cataphoresis treatment - shell coupling - top-pull-out principle for easy maintenance - optimized hydraulics - in-line design with opposite suction and discharge ports enabling mounting in pipework or on a concrete foundation - corrosion resistant maintenance-free mechanical shaft seal. <p>The motor is a 3-phase AC motor.</p> <p>Liquid: Liquid temperature range: 0 .. 140 °C</p> <p>Technical: Speed for pump data: 1420 rpm Rated flow: 39 m³/h Rated head: 4.95 m Shaft seal: BUBE Curve tolerance: ISO 9906:2012 3B</p> <p>Materials: Pump housing: Bronze DIN W.-Nr. 2.1050 ASTM B505-C90700</p> <p>Impeller: Stainless steel DIN W.-Nr. 1.4301 AISI 304</p> <p>Installation: Maximum ambient temperature: 60 °C Maximum operating pressure: 10 bar Flange standard: DIN Pipe connection: DN 80 Pressure stage: PN 10 Port-to-port length: 360 mm Flange size for motor: FT100</p> <p>Electrical data: Motor type: 90S C IE Efficiency class: IE 3 Number of poles: 4 Rated power - P₂: 0.75 kW Mains frequency: 50 Hz Rated voltage: 3 x 220-240 V/380-415 V Rated current: 3,30/1,90 A Starting current: 620-670 % Cos phi - power factor: 0,71-0,64 Rated speed: 1455-1463 rpm Efficiency: IE 3 82,5%</p>

Position	Qty.	Description
		Motor efficiency at full load: 82,5 % Motor efficiency at 3/4 load: 83,6 % Motor efficiency at 1/2 load: 81,1 % Enclosure class (IEC 34-5):: 55 Dust/etting Insulation class (IEC 85): F Others: Label: Grundfos Blueflux Minimum efficiency index, MEI h: 0.70 ErP status: EuP Standalone/Prod. Net weight: 55.4 kg Gross weight: 61.3 kg Shipping volume: 0.16 mE

96402434 TP 80-60/4 B 50 Hz

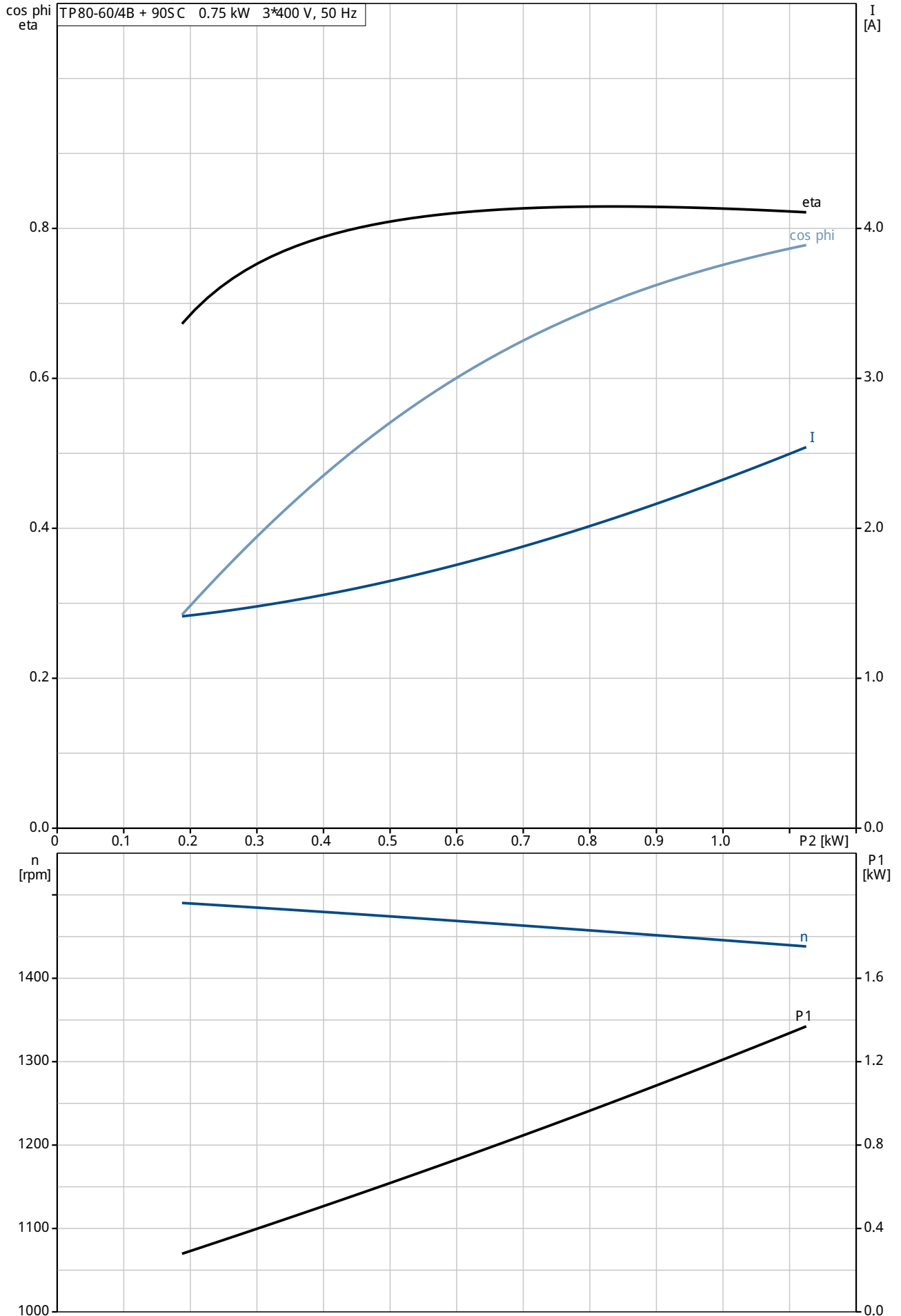


Description	Value
General information:	
Product name:	TP 80-60/4 B A-F-Z-BUBE
Position:	
Product No:	96402434
EAN number:	5700390669287
Price:	On request
Technical:	
Speed for pump data:	1420 rpm
Rated flow:	39 m ³ /h
Rated head:	4.95 m
Head max:	60 dm
Shaft seal:	BUBE
Curve tolerance:	ISO 9906:2012 3B
Pump version:	A
Model:	A
Materials:	
Pump housing:	Bronze DIN W.-Nr. 2.1050 ASTM B505-C90700
Impeller:	Stainless steel DIN W.-Nr. 1.4301 AISI 304
Material code:	Z
Installation:	
Maximum ambient temperature:	60 °C
Maximum operating pressure:	10 bar
Flange standard:	DIN
Connect code:	F
Pipe connection:	DN 80
Pressure stage:	PN 10
Port-to-port length:	360 mm
Flange size for motor:	FT100
Liquid:	
Liquid temperature range:	0 .. 140 °C
Electrical data:	
Motor type:	90SC
IE Efficiency class:	IE 3
Number of poles:	4
Rated power - P ₂ :	0.75 kW
Mains frequency:	50 Hz
Rated voltage:	3 x 220-240 D/380-415 Y V
Rated current:	3,30/1,90 A
Starting current:	620-670 %
Cos phi - power factor:	0,71-0,64
Rated speed:	1455-1463 rpm
Efficiency:	IE 3 82,5%
Motor efficiency at full load:	82,5 %
Motor efficiency at 3/4 load:	83,6 %
Motor efficiency at 1/2 load:	81,1 %
Enclosure class (IEC 34-5)::	55 Dust/etting
Insulation class (IEC 85):	F
Motor protec:	NONE
Motor No:	86U05904
Others:	
Label:	Grundfos Blueflux
Minimum efficiency index, MEI _h :	0.70
ErP status:	EuP Standalone/Prod.
Net weight:	55.4 kg
Gross weight:	61.3 kg
Shipping volume:	0.16 m ³

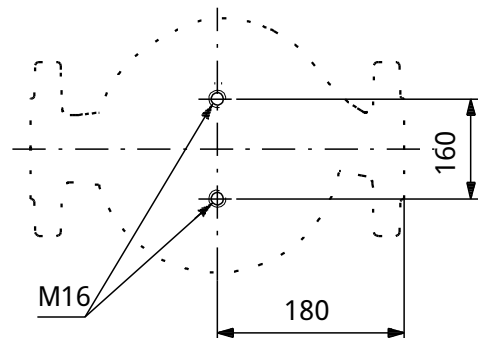
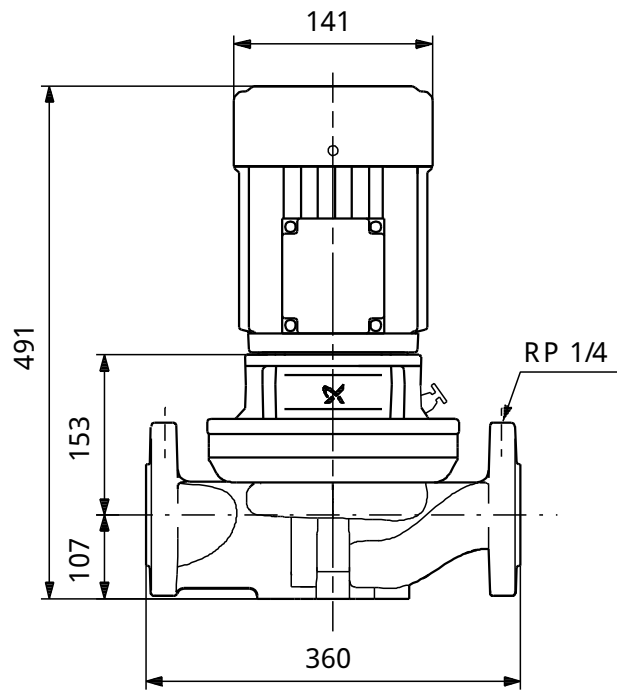
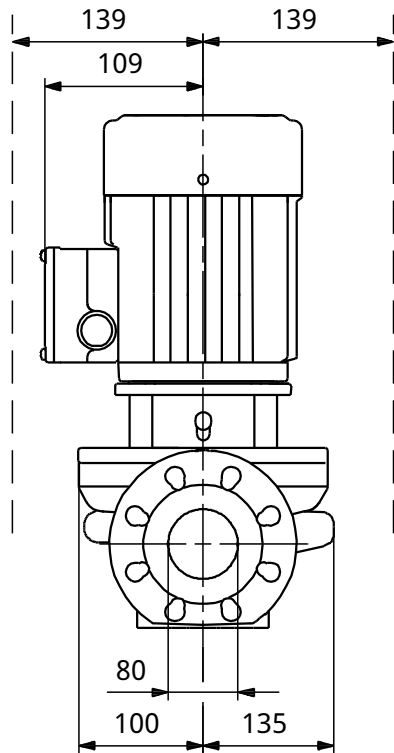


96402434 TP 80-60/4 B 50 Hz

TP80-60/4B + 90S C 0.75 kW 3*400 V, 50 Hz

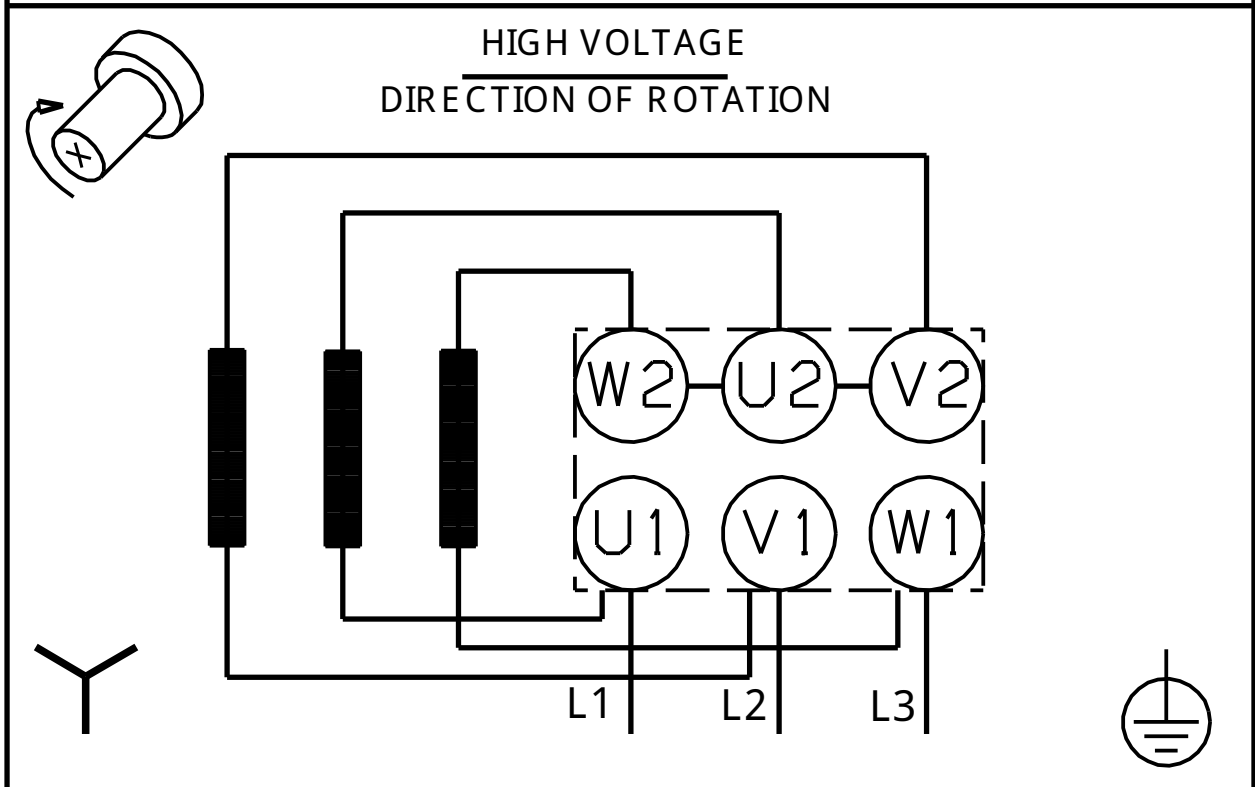
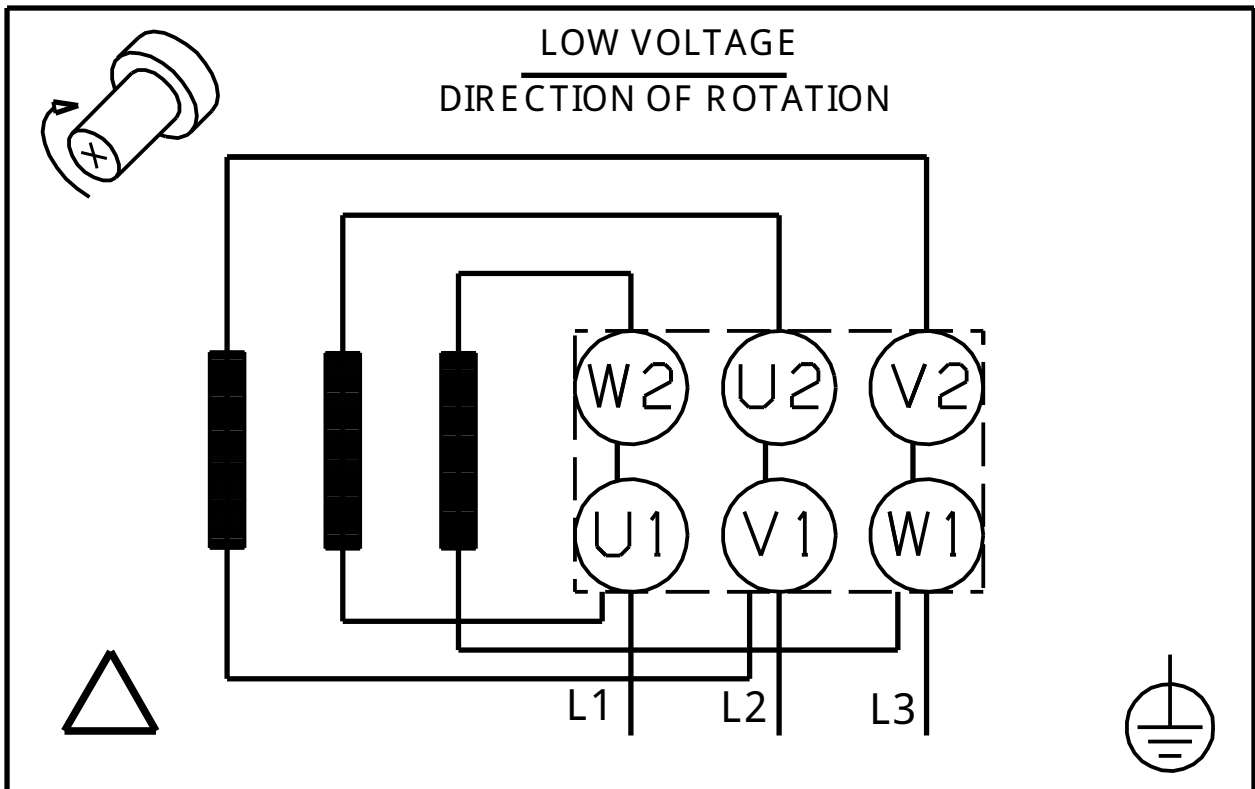


96402434 TP 80-60/4 B 50 Hz



Note! All units are in [mm] unless others are stated.
Disclaimer: This simplified dimensional drawing does not show all details.

96402434 TP 80-60/4 B 50 Hz



Note! All units are in [mm] unless others are stated.