

scheppach

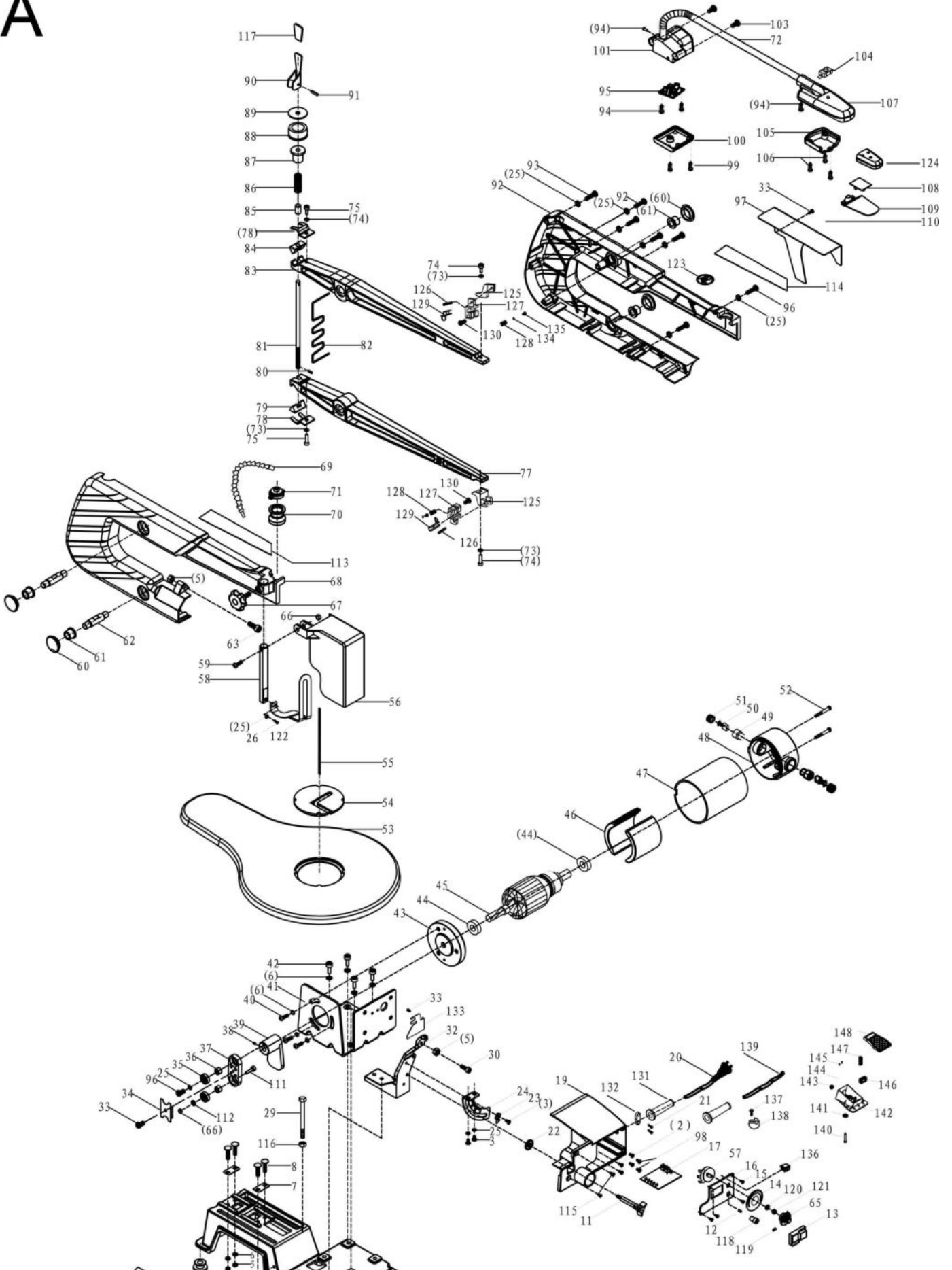
5901407901

Scroll Saw DECO-XLS
scheppach - 220-240V
50Hz 120W - 50mm





A





5901407901

Scroll Saw DECO-XLS
scheppach - 220-240V
50Hz 120W - 50mm



Main products

Spare part list

5901407901

133526 - 0110 - DECO-XLS - -

Spare	Description	additional	Item	Abb.	ConstructStatus
5901403001	spare part box		1	A	*
5901403002	foot pad		9	A	*
3040140084	Star grip bolt	M6x15 Ø25 RAL9005	11	A	*
5901403025	Fuse F5AL250V	5A / 250V	12	A	*
88000077	On / Off switch	10 (8)A / 250V KJD20	13	A	*
5901403004	scale of speed governing switch part 14		14	A	*
3901405001	cover of junction box		16	A	*
5901403005	circuit board		17	A	*
3901405002	Junction box		19	A	*
5901403045	angle block	0° - 15° - 30° - 45° RAL9005	24	A	*
5901403032	stand		32	A	*
5901403043	bar bearing pressure board part 34		34	A	*
88000059	connecting rod with bearing	625ZZ	35,37	A	*
04091641	Threaded pin	M8x8 45H galvanized DIN916	38	A	*
5901403027	flywheel	Bohrung Ø8,2	39	A	*
5901403023	Engine	electric motor cpl.	40,41,43-52,6	A	*
5901403042	Rotor		45	A	*
5901403006	carbon brush (1set=2pieces)		50	A	*
5901403007	brush holder cover	Ø12x8mm	51	A	*
5901403024	table		53	A	*
5901403008	table insert		54	A	*
88000011	Pin sawblades 6 pcs, 135 x 2 x 0,25 / T 25	135x2x0.25	55	A	*
88000012	Pin sawblades 6 pcs, 135 x 2 x 0,25 / T 18	135x2x0.25	55	A	*
88000013	Pin sawblades 6 pcs, 135 x 3 x 0,5 / T 10	135x3x0.5	55	A	*
88001509	Round sawblades 12 pcs, 130 x x 1,03 x 0,38 / T 38	130 x 1,03 x 0,38 / Z 38	55	A	*



5901407901

Scroll Saw DECO-XLS
scheppach - 220-240V
50Hz 120W - 50mm



Main products

Spare part list

5901407901

133526 - 0110 - DECO-XLS - -

Spare	Description	additional	Item	Abb.	ConstructStatus
88000010	Universal sawblade set 5 x 12 pcs, 130 x 75 x 16	L=130mm	55	A	*
88002701	Sawblades 12 pcs, 130 x 1,16 x 0,43 / T 8		55	A	*
88002702	saw blade		55	A	*
88002703	saw blade		55	A	*
88002704	Sawblades 12 pcs, 135 x 0.82 x 0,36 / T 16		55	A	*
88002705	Sawblades 12 pcs, 135 x 0.62 x 0,29 / T 20		55	A	*
5901403009	transparent hood		56	A	*
5901403011	speed controller		57	A	*
5901403030	fixed link part 58		58	A	*
02798516	oval head screw	M4x30 DIN 7985 4.8 galvanized	59	A	*
5901403028	governor switch knob part 65		65	A	*
02098502	Hexagon nut, self-locking	M4 DIN985 - 6 galvanized	66	A	*
3040140084	Star grip bolt	M6x15 Ø25 RAL9005	67	A	*
5901403029	side plate left and right part 68+92		68,92	A	*
5901403012	hose		69	A	*
5901403013	air bag		70	A	*
5901403014	outlet fasten piece		71	A	*
02144002	washer	4 ST 1440 VZ	73	A	*
02798514	oval head screw	M4x20	74	A	*
5901403020	rocker below part 77		77	A	*
5901403015	spanner cpl.		78-81,73,74,84-A 91,117		*
88000024	triangle card part below		79	A	*
5901403031	rocker spring part 82		82	A	*
5901403021	rocker up part 83		83	A	*
88000078	triangle card part up		84	A	*



Main products

Spare part list

5901407901

133526 - 0110 - DECO-XLS - -

Spare	Description	additional	Item	Abb.	ConstructStatus
88000028	Bearing 18112501	RD26x15	88	A	*
02902108	washer	A8Ø23/8x2	89	A	*
3901405004	lamp assy		99- 110,94,95,124,72	A	*
5901403026	fuse fixed seat part 118		118	A	*
5901403041	workpiece plate part 122		122	A	*
5901403017	clamping piece seat		125	A	*
3901405005	saw blade clamping piece		127-130,134,135	A	*
3901405006	Screw with O-ring and head locker	M6x10	128,134,135	A	*
3901405007	switch	KGD2 6A 250V	136	A	*
3901405008	foot pedal assy		139-148	A	*