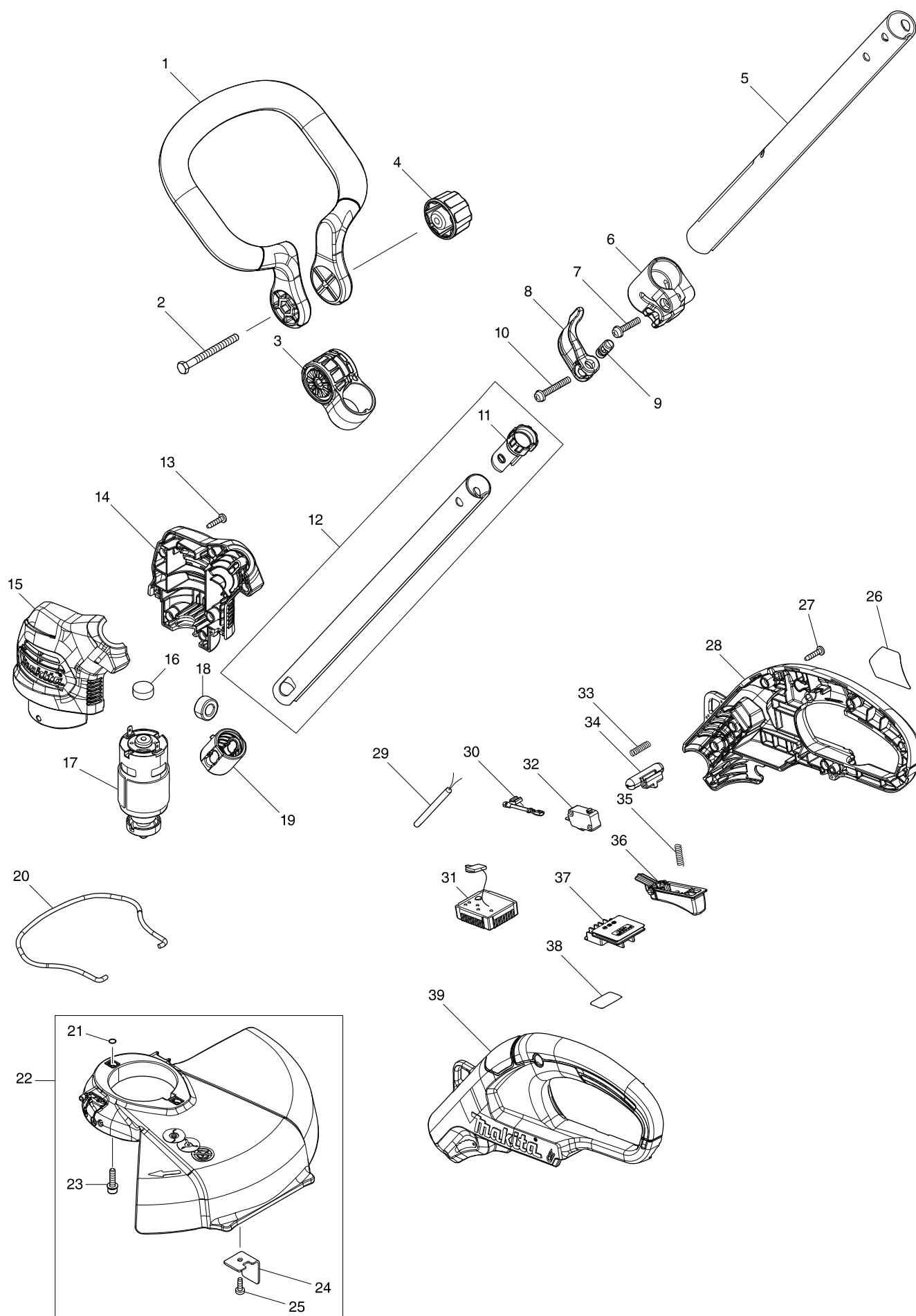


Číslo typu UR100D CORDLESS GRASS TRIMMER



Číslo typu UR100D CORDLESS GRASS TRIMMER

Strana 1 / 2

Položka	Číslo dílu	Popis	Změn	Množst	N/O	Možnost 1	Možnost 2	Poznámka
001	458505-8	FRONT GRIP		1				
002	921387-6	HEX. BOLT M6X65		1				
003	458260-2	GRIP HOLDER		1				
004	264072-1	THUMB NUT M6		1				
005	144939-8	PIPE 28 COMPLETE A		1				
C10	808723-2	CAUTION LABEL		1				
C20	816F56-7	CAUTION LABEL		1				
006	458256-3	SLEEVE		1				
C10	252103-8	zajišťovací šroub M5-8		2				
007	911243-8	šroub M5x25		1				
008	458257-1	LEVER		1				
009	319667-6	PIN 9		1	*			
009-1	327190-7	PIN9	X	1				
010	911258-5	šroub M5x35 = old 290028		1				
011	458258-9	PIPE CAP		1				
012	135952-7	PIPE24 ASS'Y		1				
D10		INC. 11						
013	266326-2	šroub 4x18=new265995-6		6				
014	183H91-5	MOTOR HOUSING SET		1				
C10	346275-0	PLATE		2				
D10		INC. 15						
015	183H91-5	MOTOR HOUSING SET		1				
C10	346275-0	PLATE		2				
D10		INC. 14						
016	421940-3	pouzdro		1				
017	629315-2	DC MOTOR		1				
018	688131-1	filtr MT240/HM1801/1810/HR24=old688106-0		1				
019	424567-8	RUBBER SLEEVE 24		1				
020	327065-0	WIRE GUARD		1				
021	213023-1	o-ring 4		2				
022	135950-1	PROTECTOR ASS'Y		1				
D10		INC. 21,23-25						
023	911139-3	PAN HEAD SCREW M4X20 WG		2				
024	346555-4	CORD CUTTER		1				
025	266427-6	TAPPING SCREW 4X12		1				
026	854A93-3	UR100D NAME PLATE		1				
027	266326-2	šroub 4x18=new265995-6		6				
028	183H89-2	HANDLE SET		1				
C10	263002-9	vymezovací čep 4		4				
D10		INC. 39						
029	699113-8	POWER SUPPLY CORD UNIT		1				
030	632L22-0	LEAD UNIT		1				
031	620780-8	CONTROLLER		1				
032	650744-8	SWITCH D3V-16-3C26		1				
033	231473-8	Compression Spring 4		1				
034	452438-9	LOCK OFF BUTTON		1	*			
034-1	458900-2	LOCK OFF BUTTON	X	1				
035	231473-8	Compression Spring 4		1				

Číslo typu UR100D CORDLESS GRASS TRIMMER

Strana 2 / 2

Položka	Číslo dílu	Popis	Změn	Množst	N/O	Možnost 1	Možnost 2	Poznámka
036	458259-7	SWITCH LEVER		1				
037	644813-5	TERMINAL		1				
038	854B01-0	UR100D SERIAL NO. LABEL		1				
039	183H89-2	HANDLE SET		1				
C10	263002-9	vymezovací čep 4		4				
D10		INC. 28						
A01	125516-5	BAND ASSEMBLY		1				
A02	783202-0	klíč inbus 4		1				
A03	831304-7	ACCESSORY BAG		1				
A04A	198854-8	TRIMMER HEAD 75-M8R SET ME		1				
A04B	198854-8	TRIMMER HEAD 75-M8R SET ME		1				
A04C	198854-8	TRIMMER HEAD 75-M8R SET ME		1				
A05A	198860-3	NYLON CORD 1.65-15M SET ME		1				
A05B	198860-3	NYLON CORD 1.65-15M SET ME		1				
A05C	198860-3	NYLON CORD 1.65-15M SET ME		1				
A06D	198848-3	PLASTIC BLADE 230 SET ME		1				
A06E	198848-3	PLASTIC BLADE 230 SET ME		1				
A06F	198848-3	PLASTIC BLADE 230 SET ME		1				
A07D	198851-4	PLASTIC BLADE BLADE SET ME		1				
A07E	198851-4	PLASTIC BLADE BLADE SET ME		1				
A07F	198851-4	PLASTIC BLADE BLADE SET ME		1				
A09B	456128-6	BATTERY COVER		2				
A09C	456128-6	BATTERY COVER		2				
A09E	456128-6	BATTERY COVER		2				
A09F	456128-6	BATTERY COVER		2				
A10B	***DC10WC	DC10WC BATTERY CHARGER		1	*			
A10C	***DC10WC	DC10WC BATTERY CHARGER		1	*			
A10E	***DC10WC	DC10WC BATTERY CHARGER		1	*			
A10F	***DC10SA	DC10SA BATTERY CHARGER		1	*			
A10-1B	***DC10WD	DC10WD BATTERY CHARGER	O	1				
A10-1C	***DC10WD	DC10WD BATTERY CHARGER	O	1				
A10-1E	***DC10WD	DC10WD BATTERY CHARGER	O	1				
A10-1F	***DC10SB	DC10SB BATTERY CHARGER	O	1				
A11B	197396-9	BATTERY BL1021B SET		2				
A11C	197406-2	BATTERY BL1041B SET		2				
A11E	197396-9	BATTERY BL1021B SET		2				
A11F	197396-9	BATTERY BL1021B SET		2				
E01	800A66-4	SOUND 91DB LABEL		1				