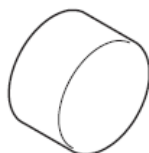
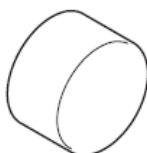


Montageanleitung



Steel Fixfit
35884800



Steel Fixfit Deluxe
35888800
Starck Fixfit Deluxe
27451XXX



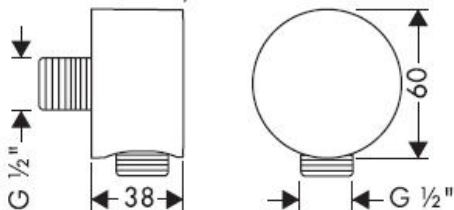
**Montreux
Fixfit Deluxe**
16884XXX

Eigensicher gegen Rückfließen

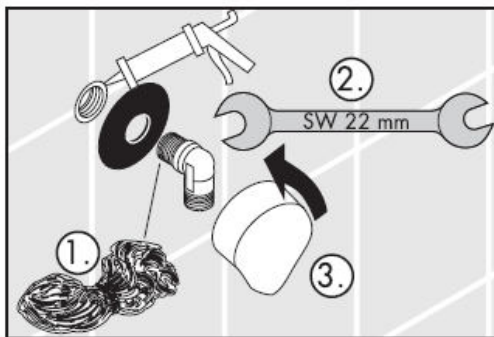
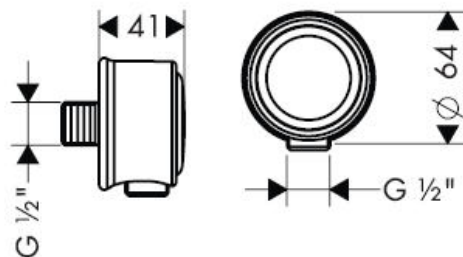
AXOR[®]

hansgrohe

Starck 27451XXX
Steel 35884800/35888800



Montreux 16884XXX

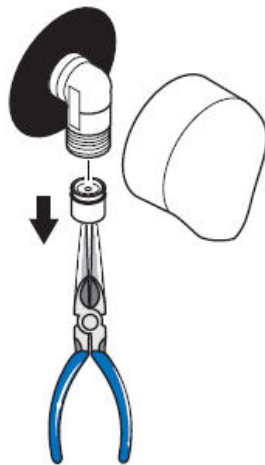


Fixfit Deluxe 27451XXX/35888800/16884XXX

DVGW Reg.-Nr.: DW-6511AT2271



Achtung! Die Rückflussverhinderer müssen gemäß DIN 1988 einmal jährlich auf ihre Funktion geprüft werden.



hansgrohe

Instructions de montage



Steel Fixfit
35884800



Steel Fixfit Deluxe
35888800
Starck Fixfit Deluxe
27451XXX



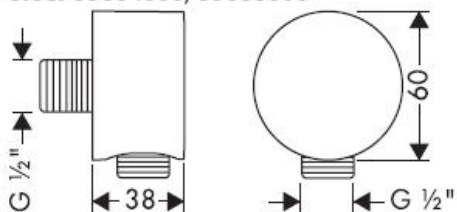
**Montreux
Fixfit Deluxe**
16884XXX

Avec dispositif anti-retour

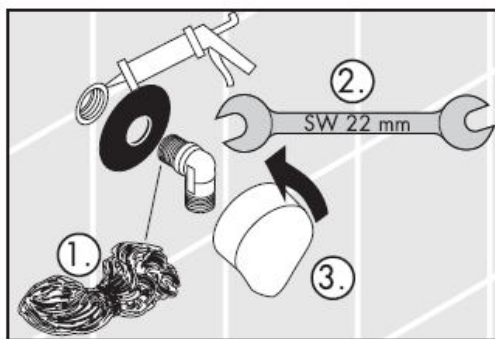
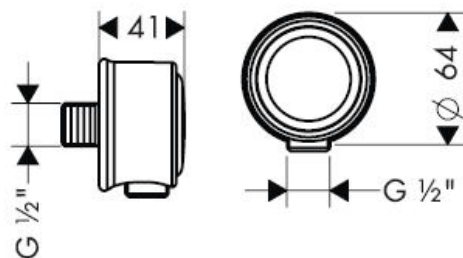
AXOR[®]

hansgrohe

Starck 27451XXX
Steel 35884800/35888800



Montreux 16884XXX

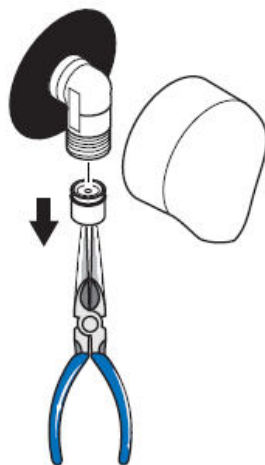


Fixfit Deluxe 27451XXX/35888800/16884XXX

DVGW Reg.-Nr.: DW-6511AT2271



Attention! Les clapets anti-retour doivent être vérifié une fois par an.



hansgrohe

assembly instructions



Steel Fixfit
35884800



Steel Fixfit Deluxe
35888800
Starck Fixfit Deluxe
27451XXX



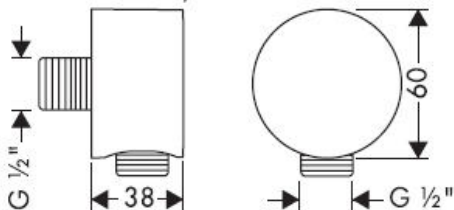
**Montreux
Fixfit Deluxe**
16884XXX

anti-pollution function

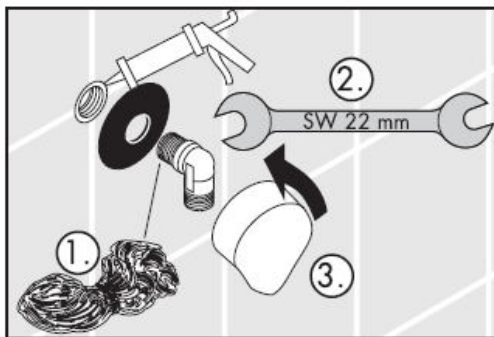
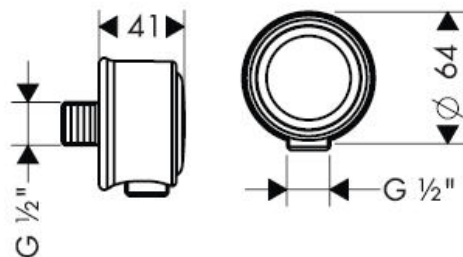
AXOR[®]

hansgrohe

Starck 27451XXX
Steel 35884800/35888800



Montreux 16884XXX

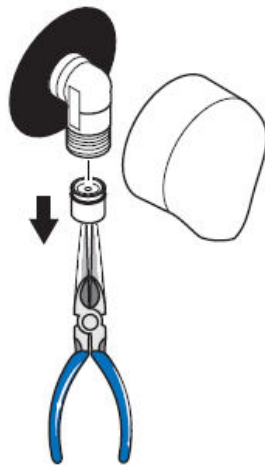


Fixfit Deluxe 27451XXX/35888800/16884XXX

DVGW Reg.-Nr.: DW-6511AT2271

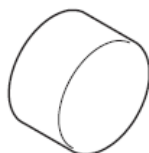


Important! The non return valves must be checked once a year.

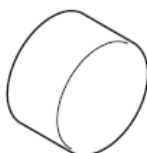


hansgrohe

Istruzioni per Installazione



Steel Fixfit
35884800



Steel Fixfit Deluxe
35888800
Starck Fixfit Deluxe
27451XXX



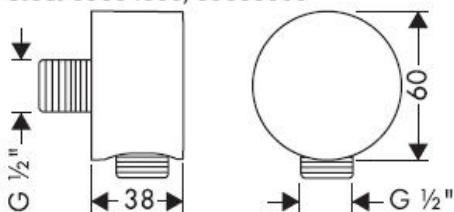
**Montreux
Fixfit Deluxe**
16884XXX

Sicurezza antiriflusso

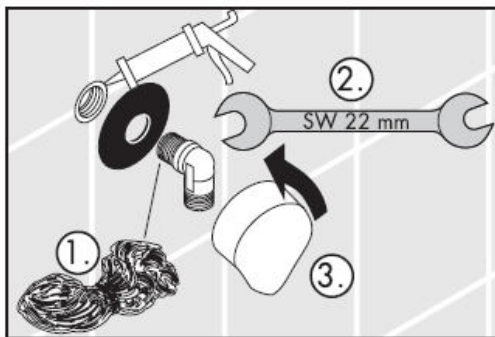
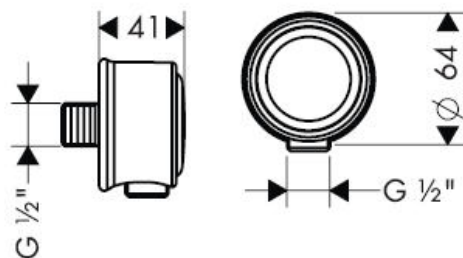
AXOR[®]

hansgrohe

Starck 27451XXX
Steel 35884800/35888800



Montreux 16884XXX

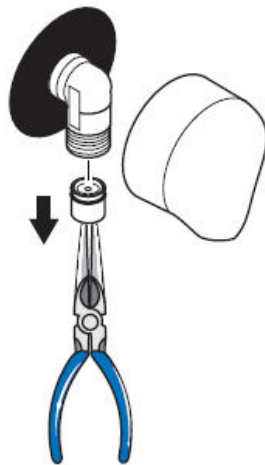


Fixfit Deluxe 27451XXX/35888800/16884XXX

DVGW Reg.-Nr.: DW-6511AT2271

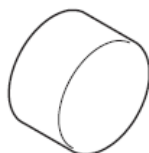


Attenzione! La valvola di non ritorno deve essere controllata una volta all'anno.

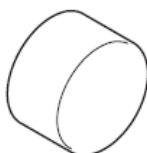


hansgrohe

Instrucciones de montaje



Steel Fixfit
35884800



Steel Fixfit Deluxe
35888800
Starck Fixfit Deluxe
27451XXX



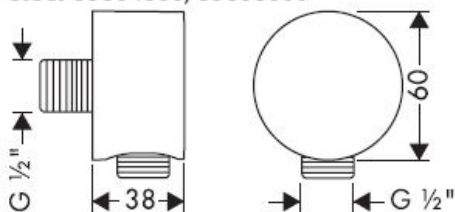
**Montreux
Fixfit Deluxe**
16884XXX

Seguro contra el retorno

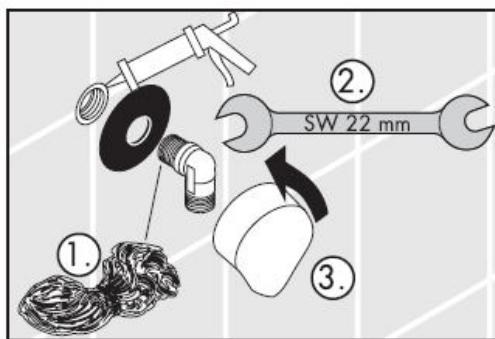
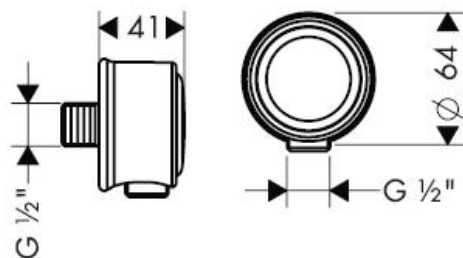
AXOR[®]

hansgrohe

Starck 27451XXX
Steel 35884800/35888800



Montreux 16884XXX

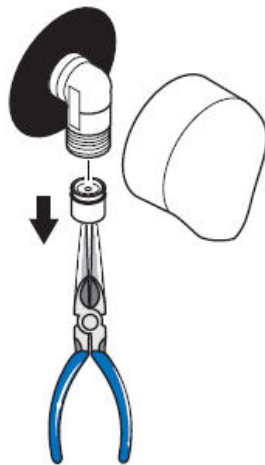


Fixfit Deluxe 27451XXX/35888800/16884XXX

DVGW Reg.-Nr.: DW-6511AT2271



¡Atención! Las válvulas anti-retorno se han de revisar una vez al año.



hansgrohe

Handleiding



Steel Fixfit
35884800



Steel Fixfit Deluxe
35888800
Starck Fixfit Deluxe
27451XXX



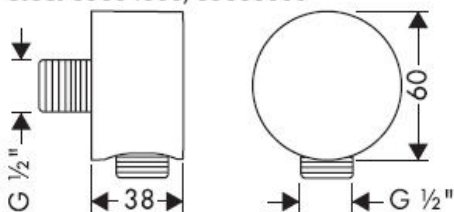
**Montreux
Fixfit Deluxe**
16884XXX

Beveiligd tegen terugstromen

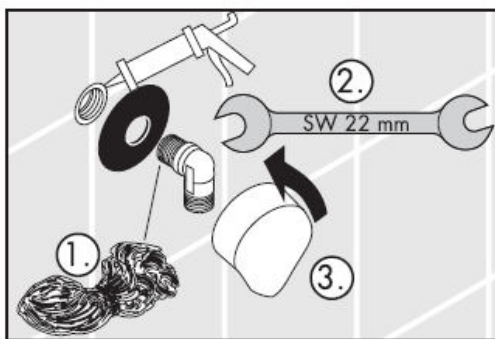
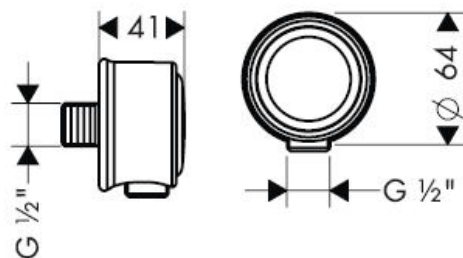
AXOR[®]

hansgrohe

Starck 27451XXX
Steel 35884800/35888800



Montreux 16884XXX

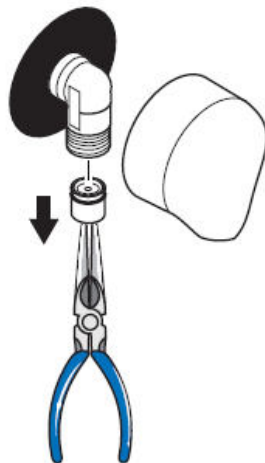


Fixfit Deluxe 27451XXX/35888800/16884XXX

DVGW Reg.-Nr.: DW-6511AT2271



Attentie! Het functioneren van de terugslagklep-pen moet jaarlijks worden getest.



hansgrohe

Monteringsvejledning



Steel Fixfit
35884800



Steel Fixfit Deluxe
35888800
Starck Fixfit Deluxe
27451XXX



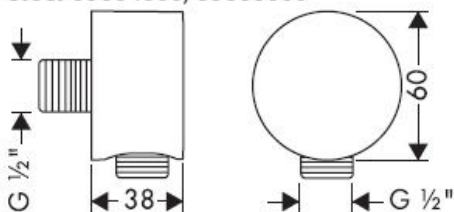
**Montreux
Fixfit Deluxe**
16884XXX

Med indbygget kontraventil

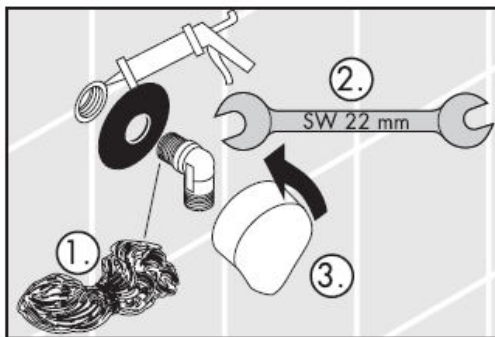
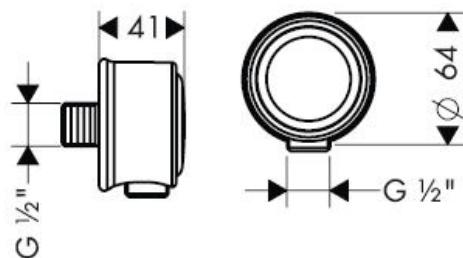
AXOR[®]

hansgrohe

Starck 27451XXX
Steel 35884800/35888800



Montreux 16884XXX

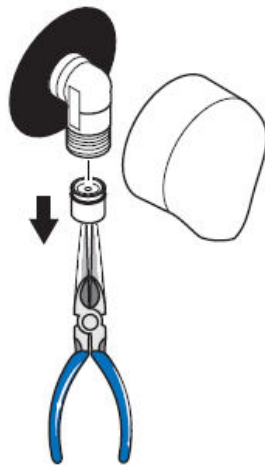


Fixfit Deluxe 27451XXX/35888800/16884XXX

DVGW Reg.-Nr.: DW-6511AT2271

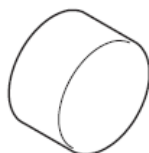


Advarsel! Kontraventilen skal afprøves en gang om året.

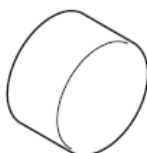


hansgrohe

Manual de Instalação



Steel Fixfit
35884800



Steel Fixfit Deluxe
35888800
Starck Fixfit Deluxe
27451XXX



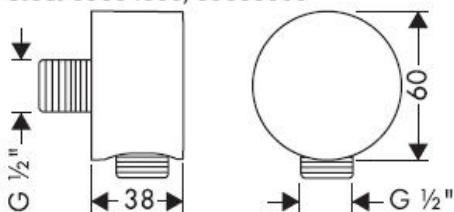
**Montreux
Fixfit Deluxe**
16884XXX

Função anti-retorno e anti-vácuo

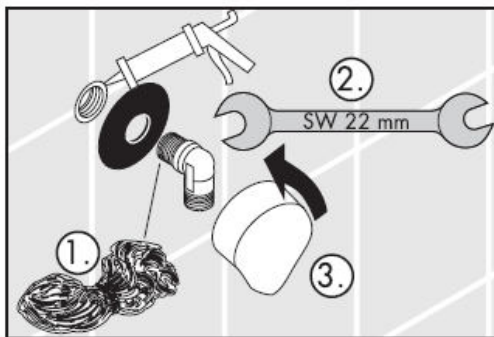
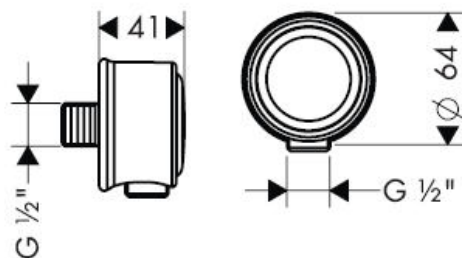
AXOR[®]

hansgrohe

Starck 27451XXX
Steel 35884800/35888800



Montreux 16884XXX

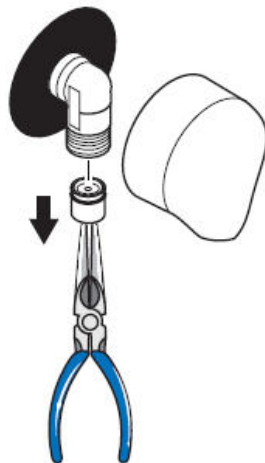


Fixfit Deluxe 27451XXX/35888800/16884XXX

DVGW Reg.-Nr.: DW-6511AT2271

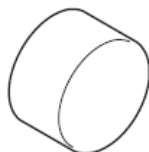


Atenção! As válvulas anti-retorno têm que ser verificadas uma vez por ano.



hansgrohe

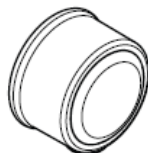
Instrukcja montażu



Steel Fixfit
35884800



Steel Fixfit Deluxe
35888800
Starck Fixfit Deluxe
27451XXX



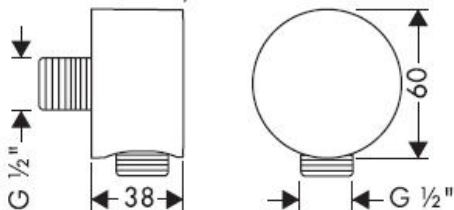
**Montreux
Fixfit Deluxe**
16884XXX

Samoistnie zabezpieczony przed
przepływem zwrrotnym

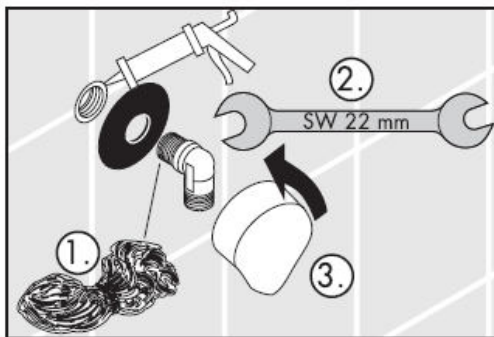
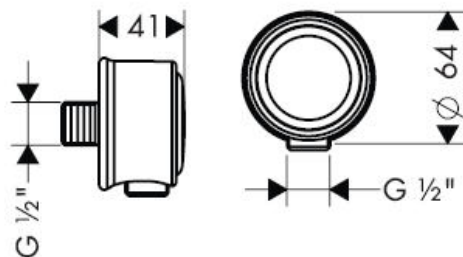
AXOR[®]

hansgrohe

Starck 27451XXX
Steel 35884800/35888800



Montreux 16884XXX

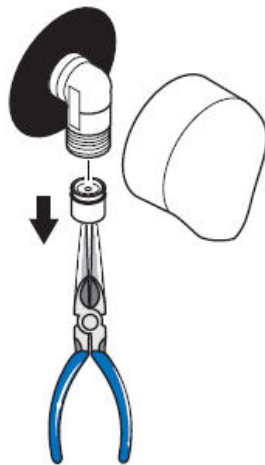


Fixfit Deluxe 27451XXX/35888800/16884XXX

DVGW Reg.-Nr.: DW-6511AT2271

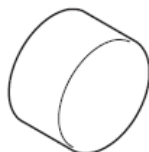


Uwaga! Zgodnie z normą DIN 1988 działanie zabezpieczeń przepływu zwrotnego należy skontrolować raz w roku.



hansgrohe

Montážní návod



Steel Fixfit
35884800



Steel Fixfit Deluxe
35888800
Starck Fixfit Deluxe
27451XXX



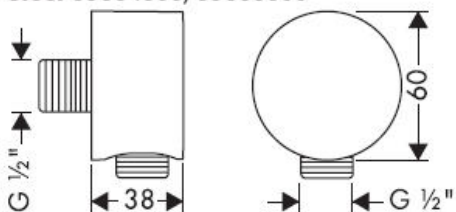
**Montreux
Fixfit Deluxe**
16884XXX

Vlastní jištění proti zpětnému nasátí.

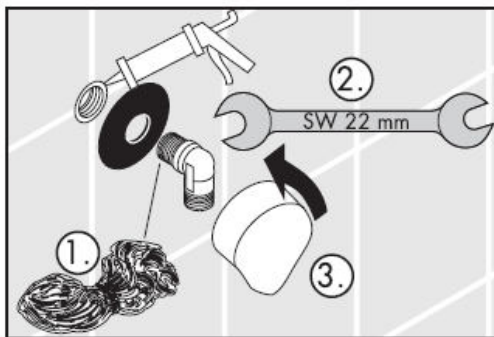
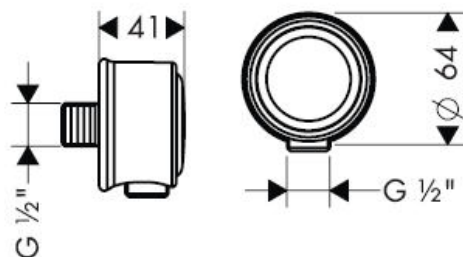
AXOR[®]

hansgrohe

Starck 27451XXX
Steel 35884800/35888800



Montreux 16884XXX

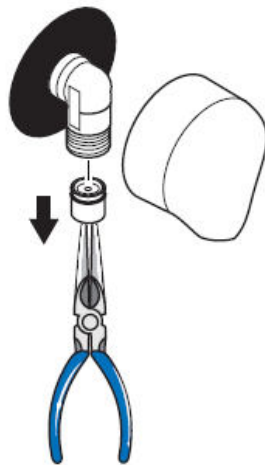


Fixfit Deluxe 27451XXX/35888800/16884XXX

DVGW Reg.-Nr.: DW-6511AT2271



Pozor! U jistění proti zpětnému nasátí musí být podle normy DIN 1988 jednou ročně přezkoušena jeho funkce.



hansgrohe

Montážny návod



Steel Fixfit
35884800



Steel Fixfit Deluxe
35888800
Starck Fixfit Deluxe
27451XXX



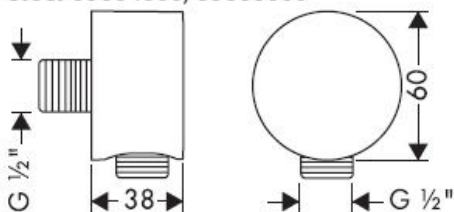
**Montreux
Fixfit Deluxe**
16884XXX

Vlastná poistka proti spätnému nasatiu.

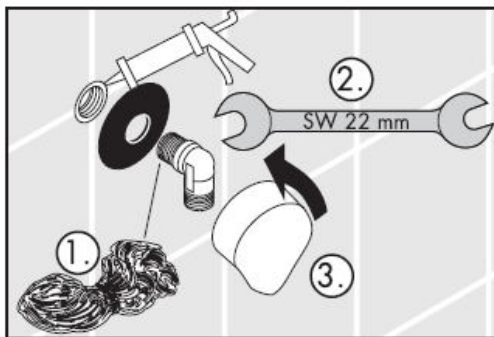
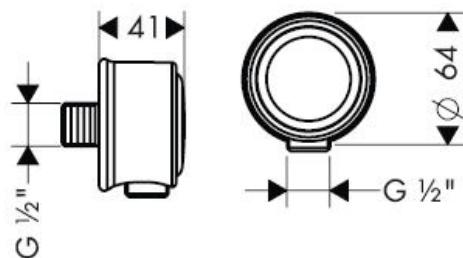
AXOR[®]

hansgrohe

Starck 27451XXX
Steel 35884800/35888800



Montreux 16884XXX

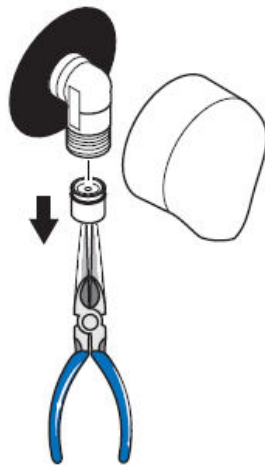


Fixfit Deluxe 27451XXX/35888800/16884XXX

DVGW Reg.-Nr.: DW-6511AT2271

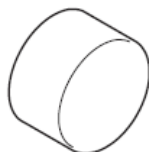


Pozor! Pri poistke proti spätnému nasatiu musí byť podľa normy
DIN 1988 raz ročne preskúšaná jej funkčnosť.



hansgrohe

组装说明



Steel Fixfit
35884800



Steel Fixfit Deluxe
35888800
Starck Fixfit Deluxe
27451XXX



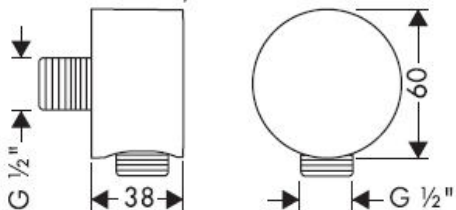
**Montreux
Fixfit Deluxe**
16884XXX

自动防止回流

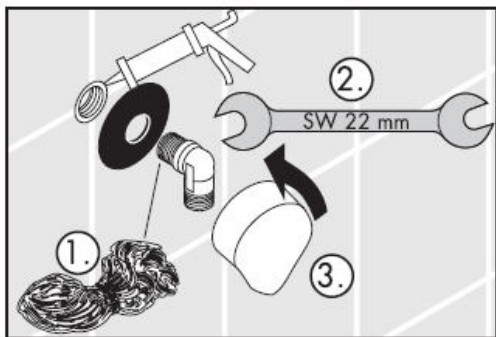
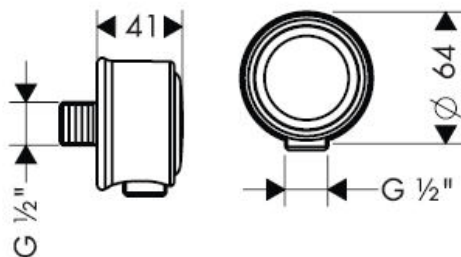
AXOR[®]

hansgrohe

Starck 27451XXX
Steel 35884800/35888800



Montreux 16884XXX

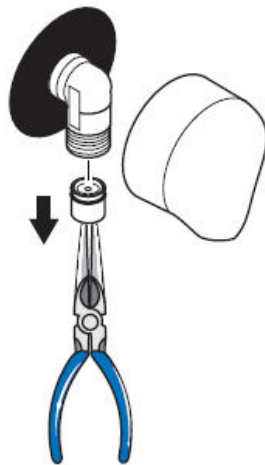


Fixfit Deluxe 27451XXX/35888800/16884XXX

DVGW Reg.-Nr.: DW-6511AT2271



注意！ 每年必须按照DIN 1988对单向阀的功能进行一次检查。



hansgrohe

Инструкция по монтажу



Steel Fixfit
35884800



Steel Fixfit Deluxe
35888800
Starck Fixfit Deluxe
27451XXX



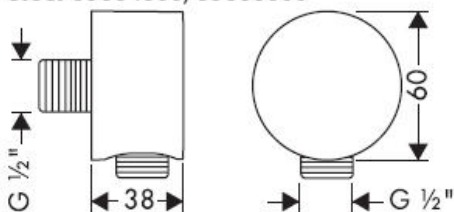
**Montreux
Fixfit Deluxe**
16884XXX

укомплектован клапаном обратного тока
воды

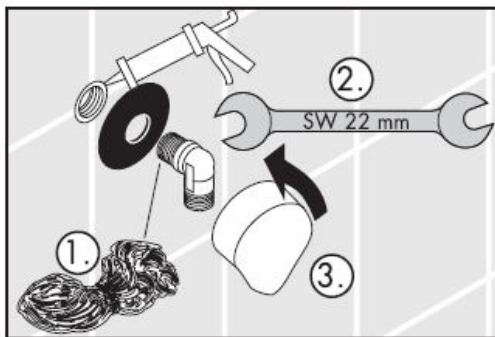
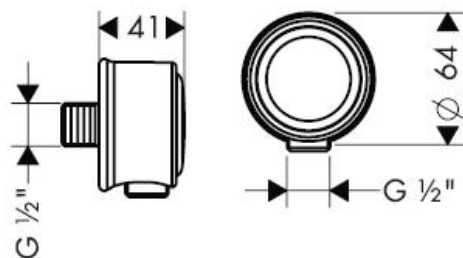
AXOR[®]

hansgrohe

Starck 27451XXX
Steel 35884800/35888800



Montreux 16884XXX

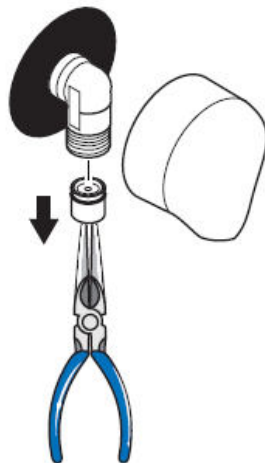


Fixfit Deluxe 27451XXX/35888800/16884XXX

DVGW Reg.-Nr.: DW-6511AT2271



ВНИМАНИЕ! клапан обратного тока воды должен проверяться
не реже одного раза в год

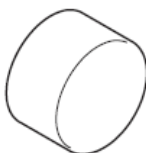


hansgrohe

Szerelési útmutató



Steel Fixfit
35884800



Steel Fixfit Deluxe
35888800
Starck Fixfit Deluxe
27451XXX



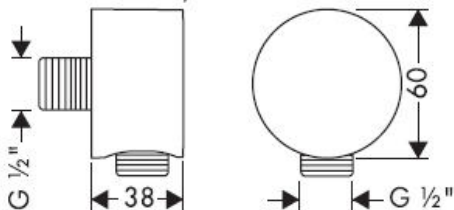
**Montreux
Fixfit Deluxe**
16884XXX

Visszafolyás gátlóval

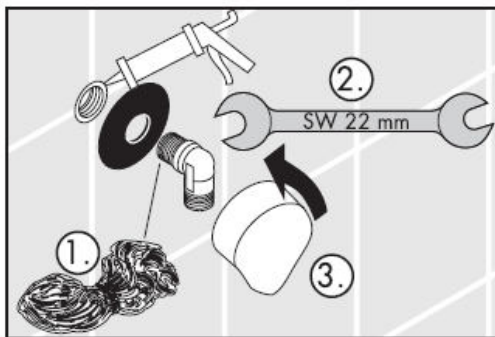
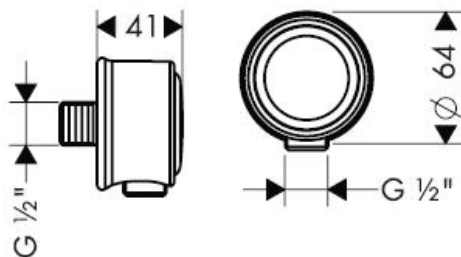
AXOR[®]

hansgrohe

Starck 27451XXX
Steel 35884800/35888800



Montreux 16884XXX

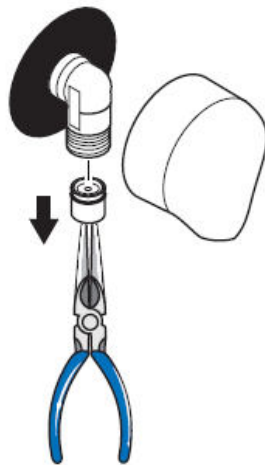


Fixfit Deluxe 27451XXX/35888800/16884XXX

DVGW Reg.-Nr.: DW-6511AT2271



Figyelem! A visszafolyásgátlók működését a DIN 1988 szerint évente egyszer ellenőrizni kell.



Asennusohje



Steel Fixfit
35884800



Steel Fixfit Deluxe
35888800
Starck Fixfit Deluxe
27451XXX



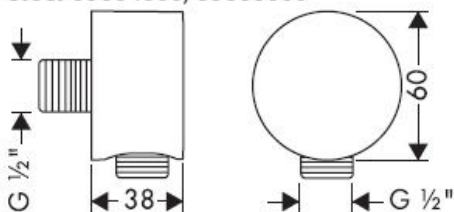
**Montreux
Fixfit Deluxe**
16884XXX

Estää itsestään paluuvirtauksen

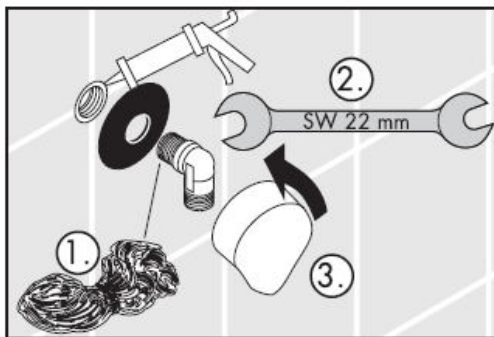
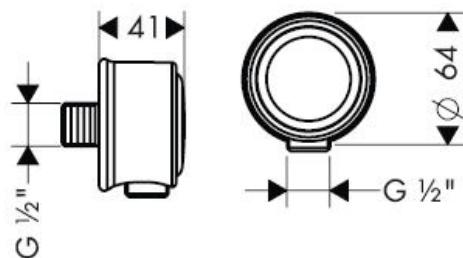
AXOR[®]

hansgrohe

Starck 27451XXX
Steel 35884800/35888800



Montreux 16884XXX

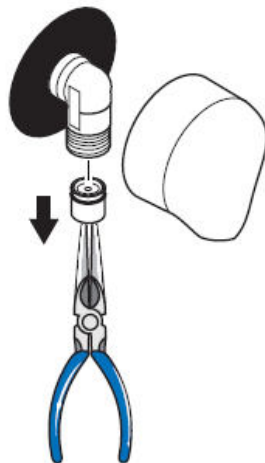


Fixfit Deluxe 27451XXX/35888800/16884XXX

DVGW Reg.-Nr.: DW-6511AT2271

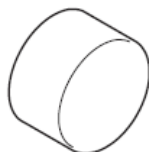


Huomio! Vastaventtiilin toiminta on normin DIN 1988 mukaan tarkastettava vuosittaan.



hansgrohe

Monteringsanvisning



Steel Fixfit
35884800



Steel Fixfit Deluxe
35888800
Starck Fixfit Deluxe
27451XXX



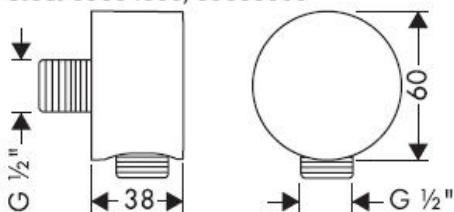
**Montreux
Fixfit Deluxe**
16884XXX

Självspärr mot återflöde

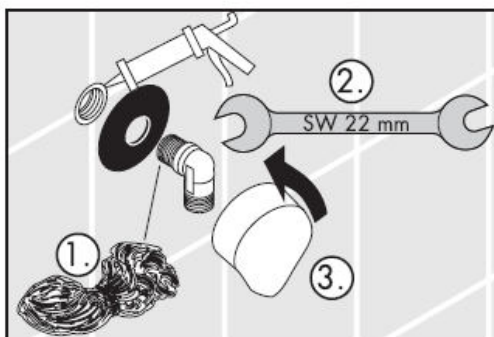
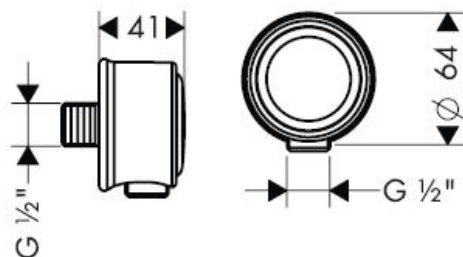
AXOR[®]

hansgrohe

Starck 27451XXX
Steel 35884800/35888800



Montreux 16884XXX

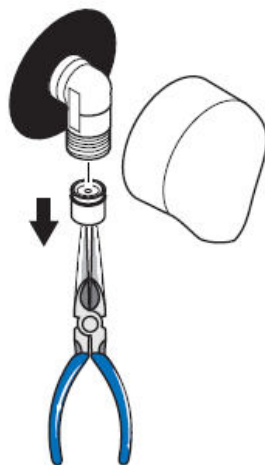


Fixfit Deluxe 27451XXX/35888800/16884XXX

DVGW Reg.-Nr.: DW-6511AT2271

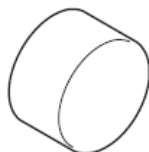


OBS! Backventilernas funktion måste kontrolleras en gång varje år enligt DIN 1988.



hansgrohe

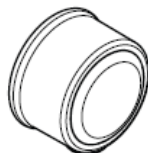
Montavimo instrukcijos



Steel Fixfit
35884800



Steel Fixfit Deluxe
35888800
Starck Fixfit Deluxe
27451XXX



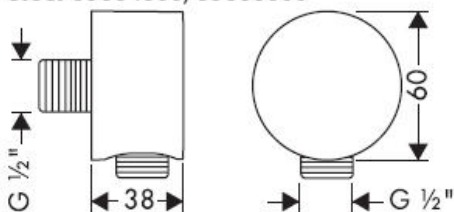
**Montreux
Fixfit Deluxe**
16884XXX

Su atbuliniu vožtuvu

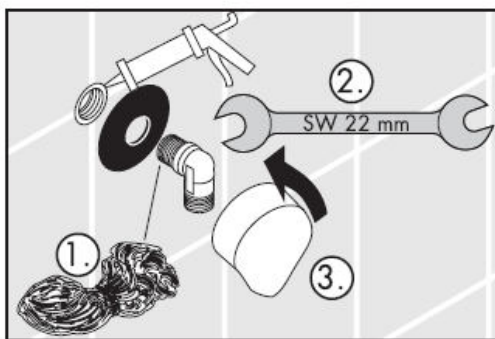
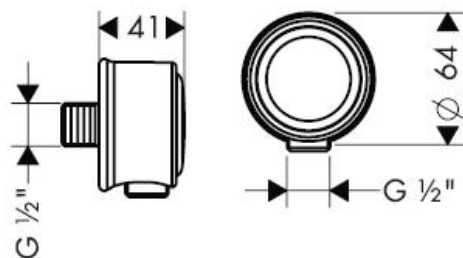
AXOR[®]

hansgrohe

Starck 27451XXX
Steel 35884800/35888800



Montreux 16884XXX

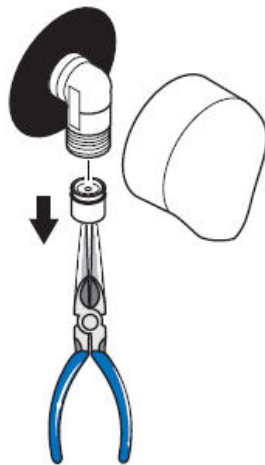


Fixfit Deluxe 27451XXX/35888800/16884XXX

DVGW Reg.-Nr.: DW-6511AT2271



Dėmesio! Atbulinių vožtuvėlių funkcija, remiantis DIN 1988, vieną kartą metuose privalo būti patikrinta.



hansgrohe

Uputstva za instalaciju



Steel Fixfit
35884800



Steel Fixfit Deluxe
35888800
Starck Fixfit Deluxe
27451XXX



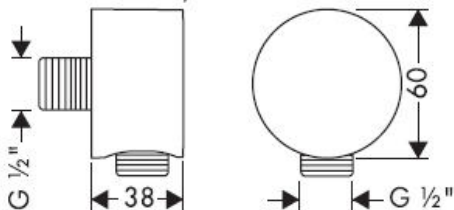
**Montreux
Fixfit Deluxe**
16884XXX

Funkcije samo-čišćenja

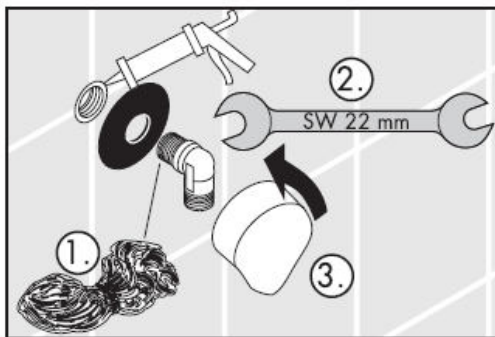
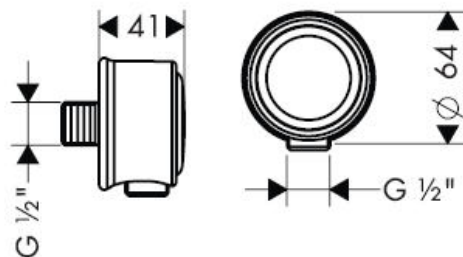
AXOR[®]

hansgrohe

Starck 27451XXX
Steel 35884800/35888800



Montreux 16884XXX

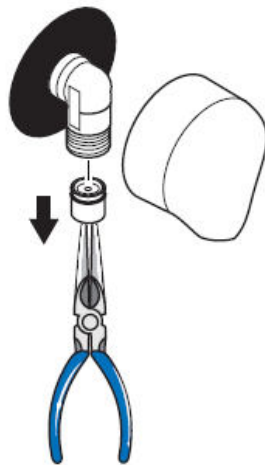


Fixfit Deluxe 27451XXX/35888800/16884XXX

DVGW Reg.-Nr.: DW-6511AT2271



Pažnja! Nepovratni ventil se mora provjeravati jednom godisnje prema standardu DIN 1988



Montaj kılavuzu



Steel Fixfit
35884800



Steel Fixfit Deluxe
35888800
Starck Fixfit Deluxe
27451XXX



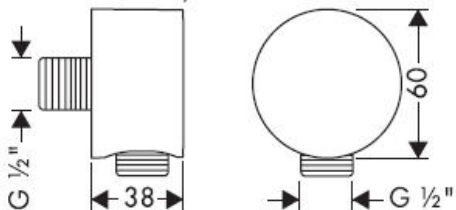
**Montreux
Fixfit Deluxe**
16884XXX

Geri emme önleyici

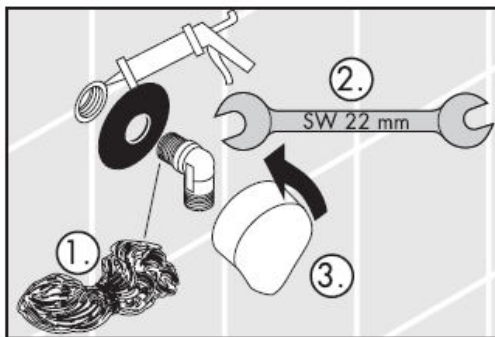
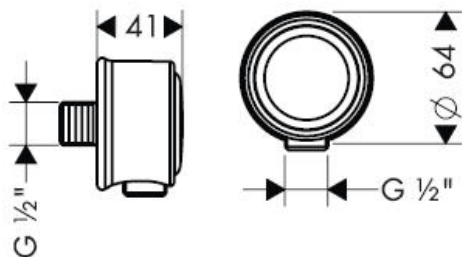
AXOR[®]

hansgrohe

Starck 27451XXX
Steel 35884800/35888800



Montreux 16884XXX

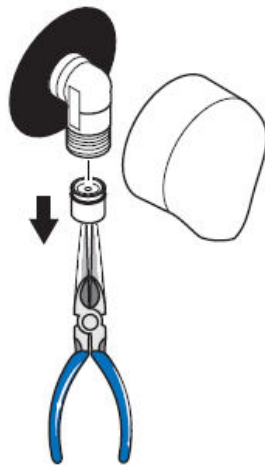


Fixfit Deluxe 27451XXX/35888800/16884XXX

DVGW Reg.-Nr.: DW-6511AT2271

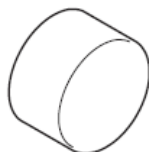


Önemli! Çek valflara DIN 1988'e göre yılda bir kez çalışma kontrolü yapılmalıdır.



hansgrohe

Instrucțiuni de montare



Steel Fixfit
35884800



Steel Fixfit Deluxe
35888800
Starck Fixfit Deluxe
27451XXX



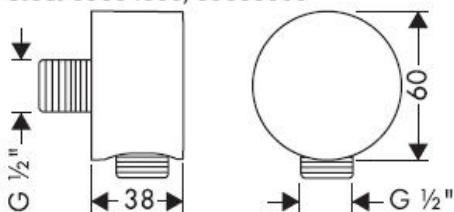
**Montreux
Fixfit Deluxe**
16884XXX

Asigurat contra scurgere înapoi

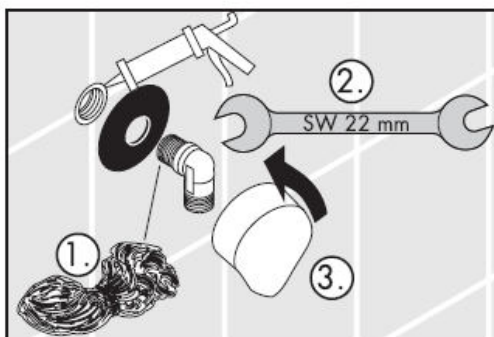
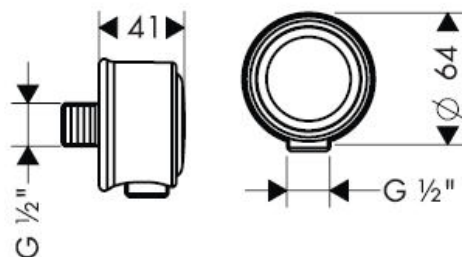
AXOR[®]

hansgrohe

Starck 27451XXX
Steel 35884800/35888800



Montreux 16884XXX

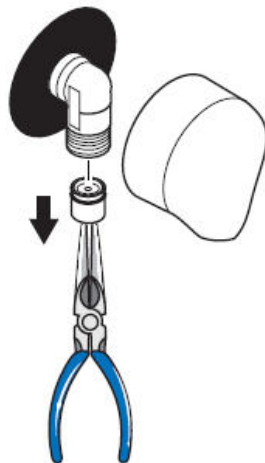


Fixfit Deluxe 27451XXX/35888800/16884XXX

DVGW Reg.-Nr.: DW-6511AT2271

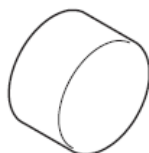


Atenție! Supapele antiretur trebuie verificate anual conform DIN 1988.

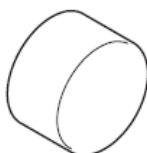


hansgrohe

Οδηγία συναρμολόγησης



Steel Fixfit
35884800



Steel Fixfit Deluxe
35888800
Starck Fixfit Deluxe
27451XXX



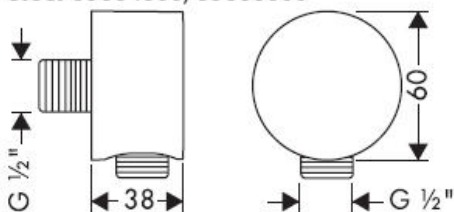
**Montreux
Fixfit Deluxe**
16884XXX

Περιλαμβάνει βαλβίδα αντεπιστροφής.

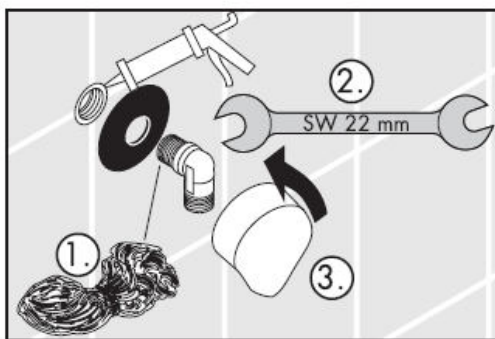
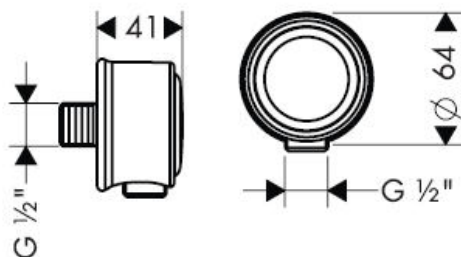
AXOR[®]

hansgrohe

Starck 27451XXX
Steel 35884800/35888800



Montreux 16884XXX

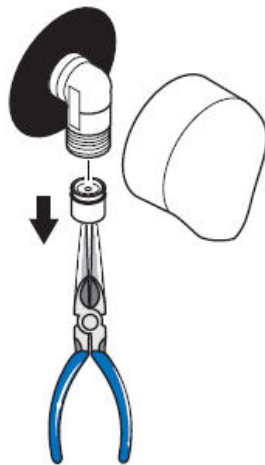


Fixfit Deluxe 27451XXX/35888800/16884XXX

DVGW Reg.-Nr.: DW-6511AT2271

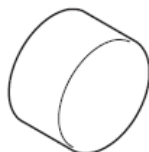


Προσοχή! Οι βαλβίδες αντεπιστροφής πρέπει να ελέγχονται μια φορά το χρόνο ως προς τη λειτουργία τους, σύμφωνα με το πρότυπο DIN 1988.



hansgrohe

تعليمات التجميع



Steel Fixfit
35884800



Steel Fixfit Deluxe
35888800
Starck Fixfit Deluxe
27451XXX



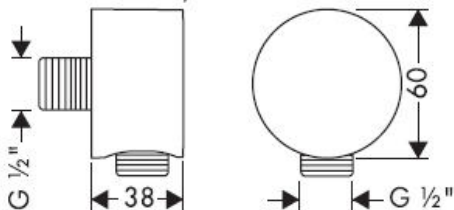
**Montreux
Fixfit Deluxe**
16884XXX

التأمين ضد التدفق العكسي

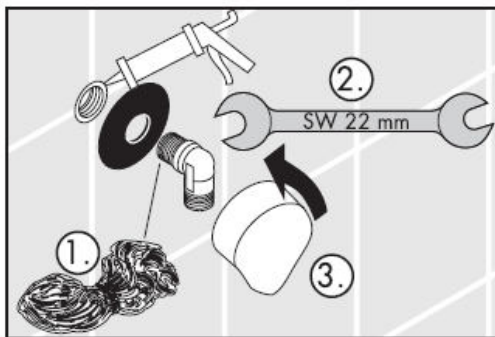
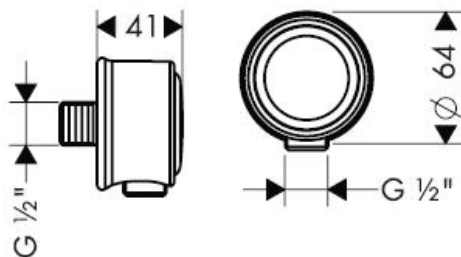
AXOR[®]

hansgrohe

Starck 27451XXX
Steel 35884800/35888800



Montreux 16884XXX

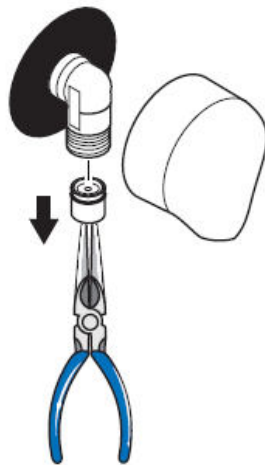


Fixfit Deluxe 27451XXX/35888800/16884XXX

DVGW Reg.-Nr.: DW-6511AT2271



يجب فحص صمامات عدم الرجوع مرة واحدة سنويا. تنبيه!



hansgrohe

Navodila za montažo



Steel Fixfit
35884800



Steel Fixfit Deluxe
35888800
Starck Fixfit Deluxe
27451XXX



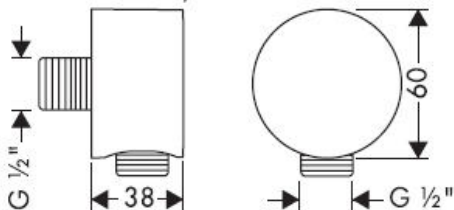
**Montreux
Fixfit Deluxe**
16884XXX

Zaščita proti povratnemu toku

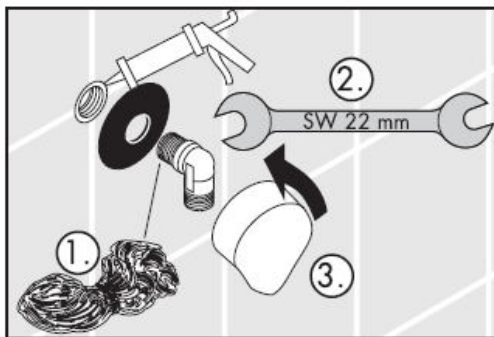
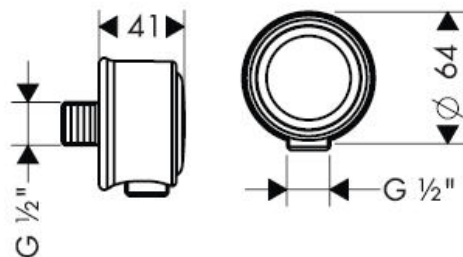
AXOR[®]

hansgrohe

Starck 27451XXX
Steel 35884800/35888800



Montreux 16884XXX

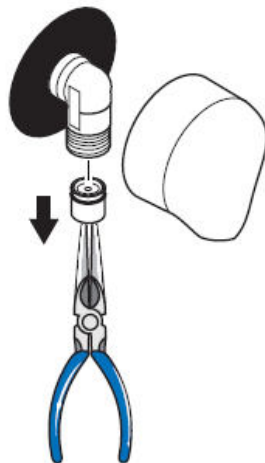


Fixfit Deluxe 27451XXX/35888800/16884XXX

DVGW Reg.-Nr.: DW-6511AT2271

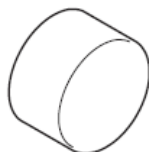


Pozor! Delovanje protipovratnega ventila je potrebno v skladu z
DIN 1988 enkrat letno testirati.



hansgrohe

Paigaldusjuhend



Steel Fixfit
35884800



Steel Fixfit Deluxe
35888800
Starck Fixfit Deluxe
27451XXX



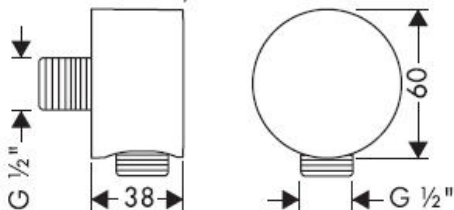
**Montreux
Fixfit Deluxe**
16884XXX

tagasivooluklapp

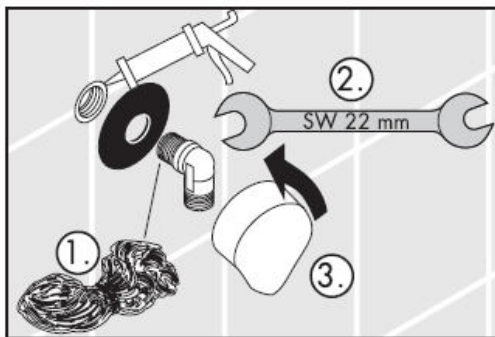
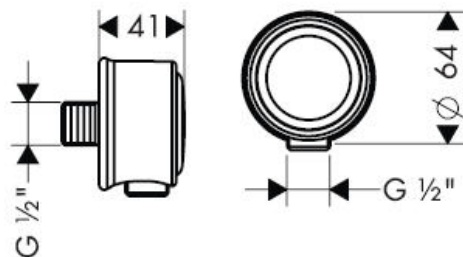
AXOR[®]

hansgrohe

Starck 27451XXX
Steel 35884800/35888800



Montreux 16884XXX

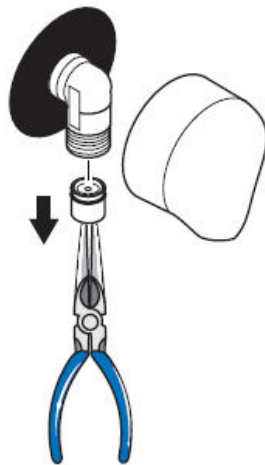


Fixfit Deluxe 27451XXX/35888800/16884XXX

DVGW Reg.-Nr.: DW-6511AT2271

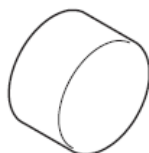


Tähelepanu! Tagasilöögiklappide toimimist tuleb kontrollida vastavalt standardile DIN 1988 kord aastas.

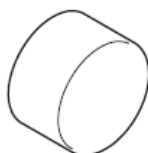


hansgrohe

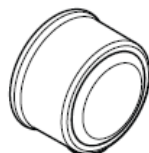
Montāžas instrukcija



Steel Fixfit
35884800



Steel Fixfit Deluxe
35888800
Starck Fixfit Deluxe
27451XXX



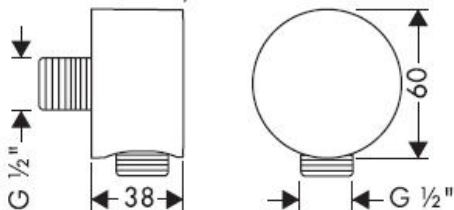
**Montreux
Fixfit Deluxe**
16884XXX

Drošības vārsts

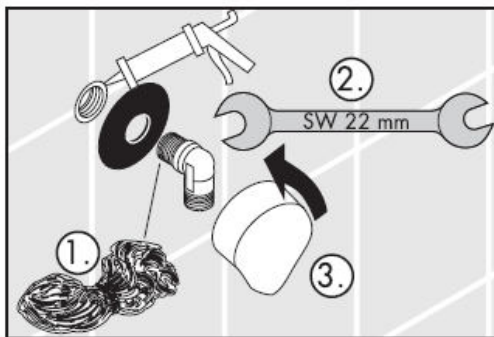
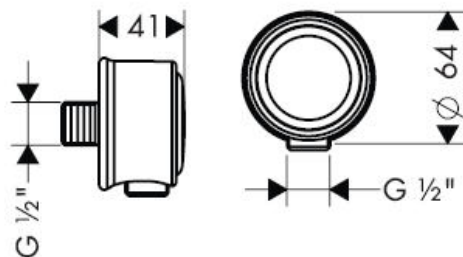
AXOR[®]

hansgrohe

Starck 27451XXX
Steel 35884800/35888800



Montreux 16884XXX

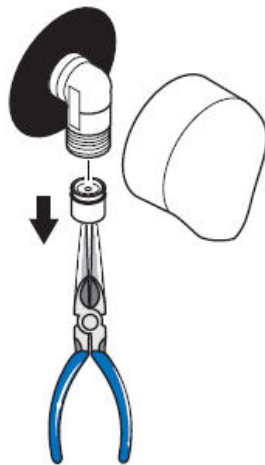


Fixfit Deluxe 27451XXX/35888800/16884XXX

DVGW Reg.-Nr.: DW-6511AT2271

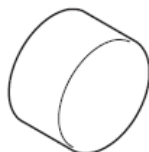


Uzmanību! Reizi gadā jāpārbauda pretvārsti atbilstoši DIN 1988.

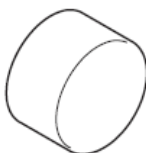


hansgrohe

Uputstvo za montažu



Steel Fixfit
35884800



Steel Fixfit Deluxe
35888800
Starck Fixfit Deluxe
27451XXX



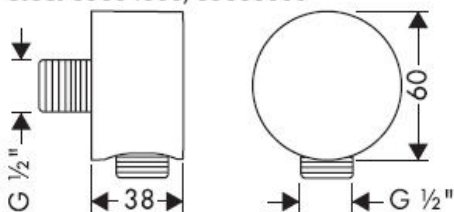
**Montreux
Fixfit Deluxe**
16884XXX

Zaštita od povratnog toka

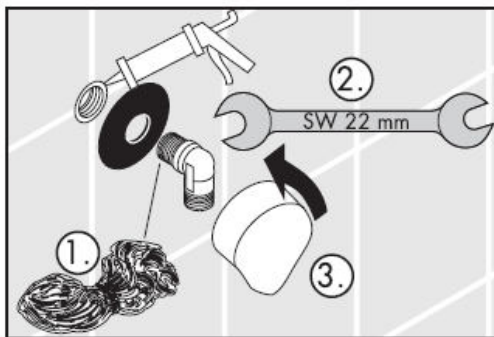
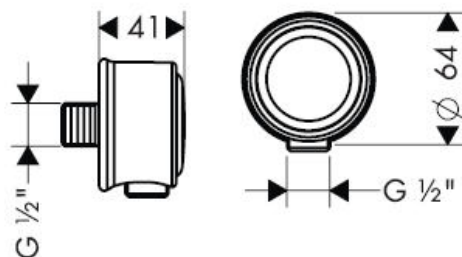
AXOR[®]

hansgrohe

Starck 27451XXX
Steel 35884800/35888800



Montreux 16884XXX

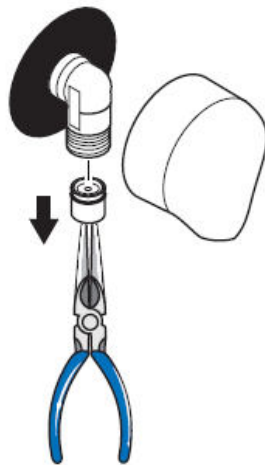


Fixfit Deluxe 27451XXX/35888800/16884XXX

DVGW Reg.-Nr.: DW-6511AT2271



Pažnja! Nepovratni ventil se mora proveravati jednom godišnje prema standardu DIN 1988.



hansgrohe

Montasjeveiledning



Steel Fixfit
35884800



Steel Fixfit Deluxe
35888800
Starck Fixfit Deluxe
27451XXX



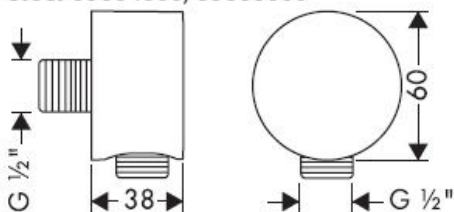
**Montreux
Fixfit Deluxe**
16884XXX

Egensikker mot tilbakeflyt

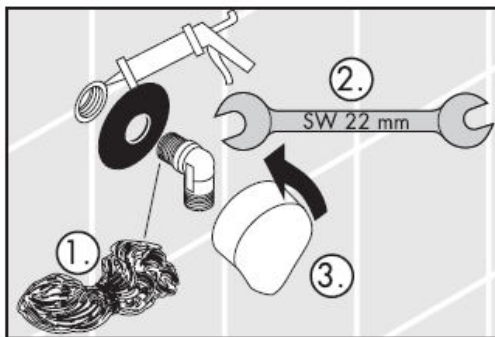
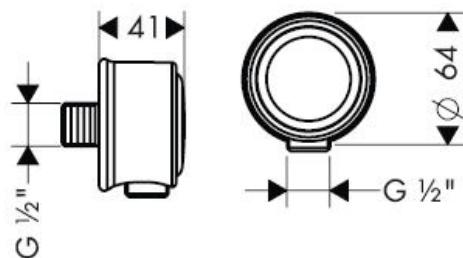
AXOR[®]

hansgrohe

Starck 27451XXX
Steel 35884800/35888800



Montreux 16884XXX

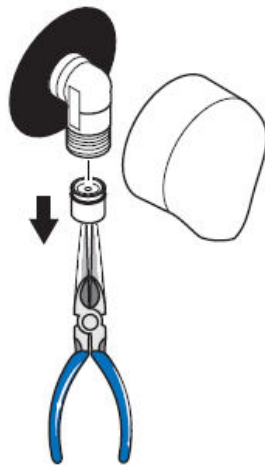


Fixfit Deluxe 27451XXX/35888800/16884XXX

DVGW Reg.-Nr.: DW-6511AT2271

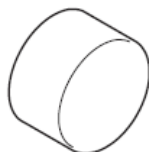


Obs! I henhold til DIN 1988 skal funksjonen til returløpssperren sjekkes en gang i året.



hansgrohe

РЪКОВОДСТВО ЗА МОНТАЖ



Steel Fixfit
35884800



Steel Fixfit Deluxe
35888800
Starck Fixfit Deluxe
27451XXX



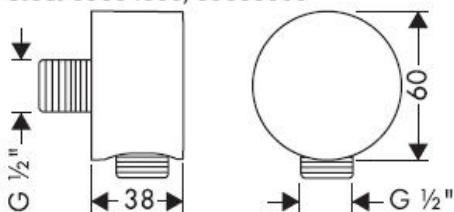
**Montreux
Fixfit Deluxe**
16884XXX

Самозащитен против обратно изтичане

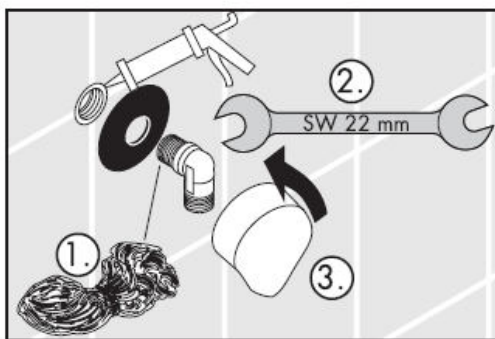
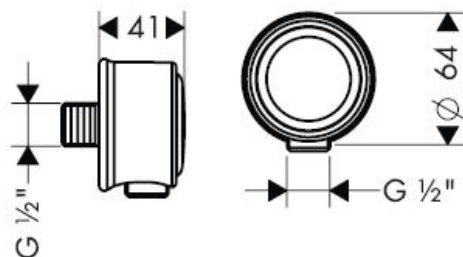
AXOR[®]

hansgrohe

Starck 27451XXX
Steel 35884800/35888800



Montreux 16884XXX

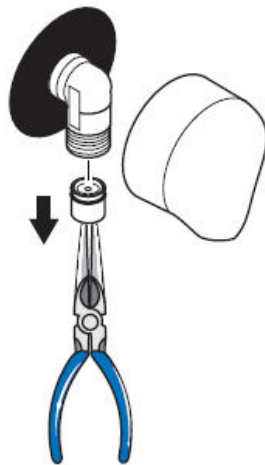


Fixfit Deluxe 27451XXX/35888800/16884XXX

DVGW Reg.-Nr.: DW-6511AT2271

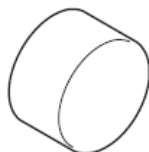


Внимание! Съгласно DIN 1988 веднъж годишно трябва да се проверява функцията на приспособленията, предотвратяващи обратния поток.



hansgrohe

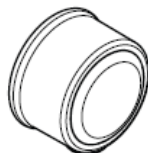
Udhëzime rreth montimit



Steel Fixfit
35884800



Steel Fixfit Deluxe
35888800
Starck Fixfit Deluxe
27451XXX



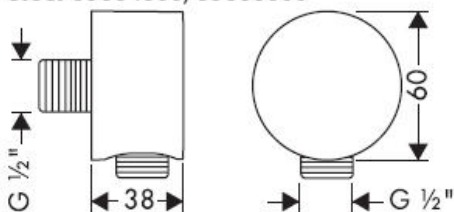
**Montreux
Fixfit Deluxe**
16884XXX

Siguresa kundër rrjedhjes në drejtim të kundërt

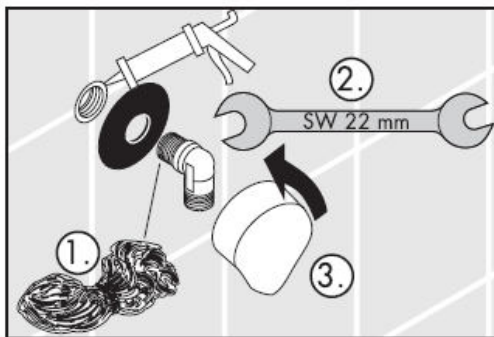
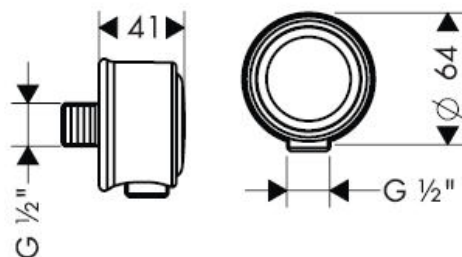
AXOR[®]

hansgrohe

Starck 27451XXX
Steel 35884800/35888800



Montreux 16884XXX

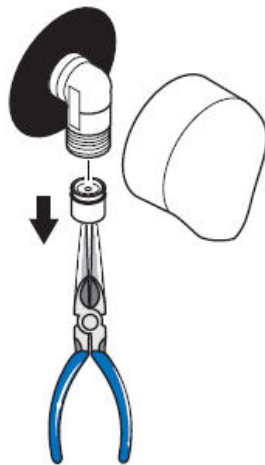


Fixfit Deluxe 27451XXX/35888800/16884XXX

DVGW Reg.-Nr.: DW-6511AT2271



Kujdes! Penguesit e rrjedhjes në drejtim të kundërt në bazë të normës DIN 1988 duhen kontrolluar njëherë në vit.



hansgrohe