



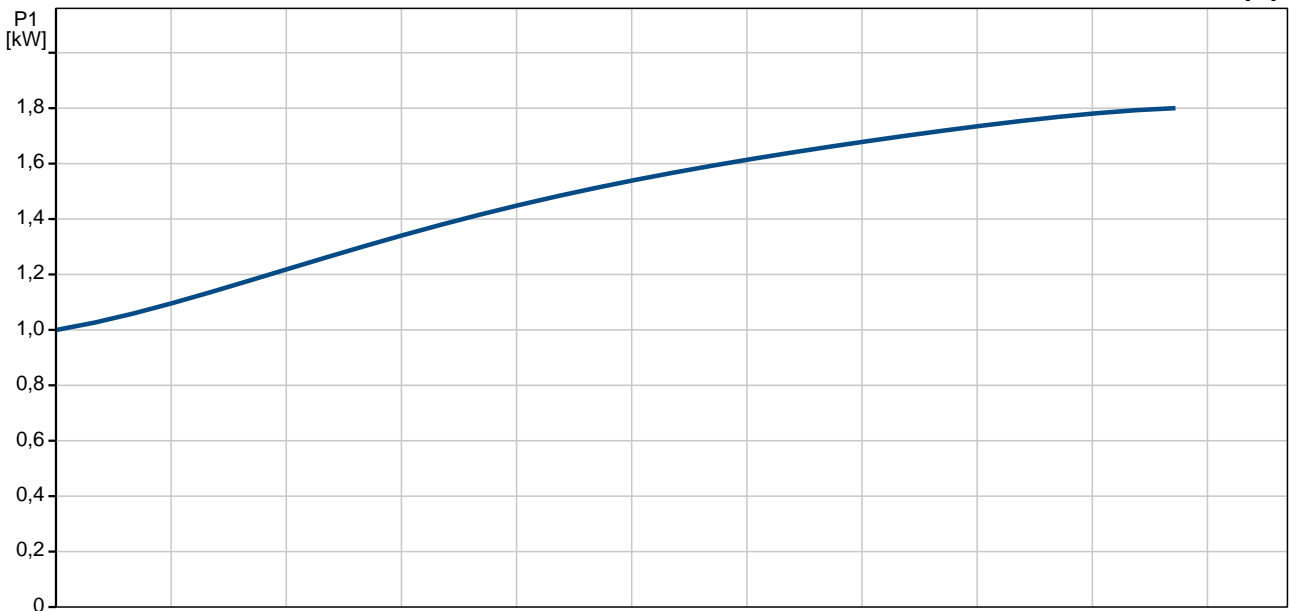
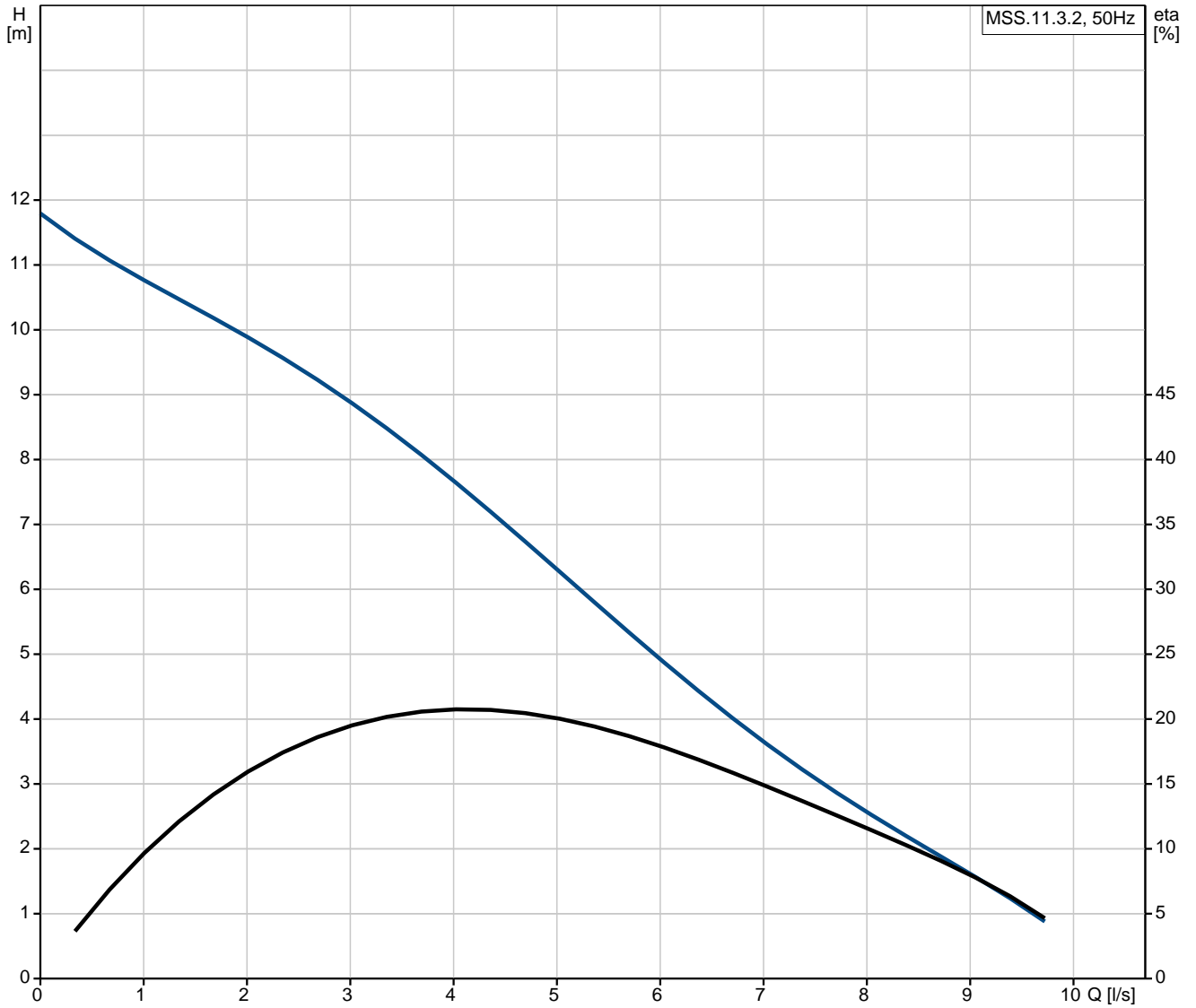
Position	Quantité	Description
	1	<p data-bbox="371 338 504 365">MSS.11.3.2</p> <div data-bbox="405 434 716 725" style="text-align: center;"> </div> <p data-bbox="762 770 1235 792" style="text-align: center;">Note ! La photo produit peut différer du produit réel</p> <p data-bbox="371 801 620 824">Référence: 97901027</p> <p data-bbox="371 862 1430 958">Supplied as complete unit ready for installation, the Multilift consist of a fully integrated collecting tank with pump and submersible motor, non-return valve, discharge adapter with flexible connection piece DN100 mounted on the collecting tank and a pre-wired Controller incl. a level sensor.</p> <p data-bbox="371 1003 1369 1077">The fully integrated collecting tank has all necessary ports for the connection of inlet pipe in heights of 180mm and 250mm, vent pipe DN50 and a manually operated diaphragm pump (accessory).</p> <p data-bbox="371 1122 1390 1196">The collecting tank contains 7 inlet sockets around it's shape. Back inlets 2x DN100 with one socket seal, socket for inlet at the sides 2 x DN100, top inlet DN100. 2x DN50 on top and side.</p> <p data-bbox="371 1240 1442 1285">Multilift corrosion free polyethylen collecting tanks are gas- and odour-proof as well as watertight , reduction of residual water and less sedimentation by chamfered bottom design.</p> <p data-bbox="371 1330 1406 1404">The pump with Vortex impeller and a maintenance free submersible motor, oil chamber with physiological harmless oil filling between two shaft seals. Motor protection via motor-protective circuit breaker inside pump head.</p> <p data-bbox="371 1449 1458 1516">LC220 controller with microprocessor is equipped with LED for all monitoring necessities. The pump and sensor are connected to the controller with 4m or 10m cable and tube length. The power supply cable is 1,5m with plug (incl. phase inverter for 3 phase motor)</p> <p data-bbox="371 1527 1445 1572">Contactless, piezo resistive pressure sensor pluggable inside the cabinet, monitored by controller. Blockage free pressure tube inside the tank without movable parts inside wastewater.</p> <p data-bbox="371 1617 916 1639">The controller offer monitoring of pump operation.</p> <p data-bbox="371 1684 592 1706">Controller functions:</p> <ul data-bbox="371 1706 1378 2087" style="list-style-type: none"> • on/off control of one wastewater pump based on a continuous signal from a piezo-resistive sensor • dry running motor protection via run-time limitation with a following emergency operation • 24h automatic test runs during long periods of inactivity • operating indication: <ul style="list-style-type: none"> - pump status (running, fault) - time for service/maintenance once a year (selectable on/off by DIP switch) • fault indication: <ul style="list-style-type: none"> - phase-sequence fault and missing phase at 3ph. motors - high-water alarm - sensor fault - external alarm-switch (only alarm)



Position	Quantité	Description
		<ul style="list-style-type: none"> - potential free contact for common alarm • automatic or manual alarm resetting (selectable by DIP switch) • easy selection of start level 180 or 250mm (selectable by DIP switch) <p>One additional input to connect a separate level switch to be used for flood detection outside the Multilift (external alarm). Lifting stations are often installed in a sump inside the basement at the lowest point in the building. In case of e.g. groundwater inflow or water pipe burst, an alarm will be indicated by the controller.</p> <p>The Multilift range is designed due to the standard EN12050-1, approved and monitored by external institute LGA. Further approvals are VDE, GHOST, CB, EMV</p> <p>Technique: Type de roue mobile: Vortex Taille maximum des impuretés: 40 mm Type de clapet: CLAPET A BATTANT</p> <p>Matériaux: Joint: NBR</p> <p>Liquide: Température liquide maximum: 40 °C</p> <p>Donnée électrique: Nombre de pôles: 2 Puissance absorbée - P1: 1.8 kW Puissance nominale - P2: 1.1 kW Fréquence d'alimentation: 50 Hz Tension nominale: 3 x 400 V Tolérance tension: +10/-6 % Méthode de démarrage: direct Nbre max. de démarrages par heure: 60 Courant nominal: 3.1 A Cos phi - Facteur de puissance: 0,85 Vitesse nominale: 2785 mn-1 Indice de protection (IEC 34-5): IP68 Classe d'isolement (IEC 85): F Type de fiche câble: CEE3P+N+PE Câble principal: 1.5 m</p> <p>Réservoir: Volume total du (des) réservoir(s): 44 l Volume effectif total du réservoir avec entrée 180mm: 20 l Volume effectif total du réservoir avec entrée 250mm: 28 l</p>



97901027 MSS.11.3.2 50 Hz



Description	Valeur
-------------	--------

Information générale:

Nom produit:	MSS.11.3.2
Position:	
Code article:	97901027
Nombre EAN::	5710626080571
Prix:	Sur demande

Technique:

Débit maxi.:	9.61 l/s
Pression maxi:	11.8 m
Type de roue mobile:	Vortex
Taille maximum des impuretés:	40 mm
Type de clapet:	CLAPET A BATTANT

Matériaux:

Joint:	NBR
--------	-----

Liquide:

Température liquide maximum:	40 °C
------------------------------	-------

Donnée électrique:

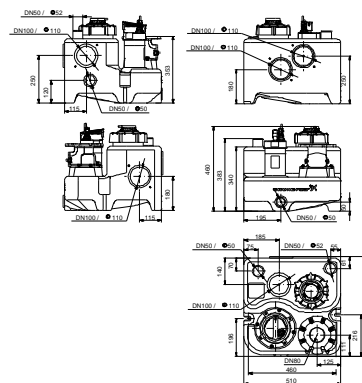
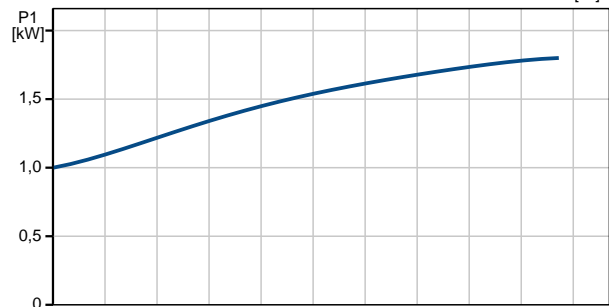
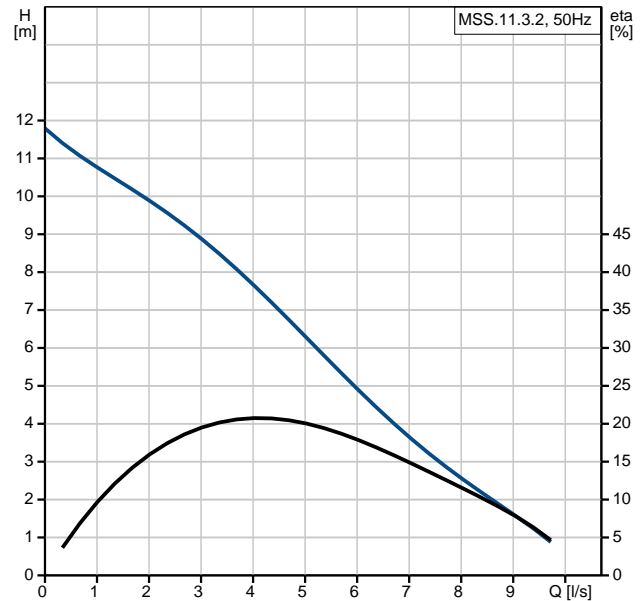
Nombre de pôles:	2
Puissance absorbée - P1:	1.8 kW
Puissance nominale - P2:	1.1 kW
Fréquence d'alimentation:	50 Hz
Tension nominale:	3 x 400 V
Tolérance tension:	+10/-6 %
Méthode de démarrage:	direct
Nbre max. de démarrages par heure:	60
Courant nominal:	3.1 A
Cos phi - Facteur de puissance:	0,85
Vitesse nominale:	2785 mn-1
Indice de protection (IEC 34-5):	IP68
Classe d'isolement (IEC 85):	F
Protection moteur:	KLIXON
Câble du moteur:	4 m
Type câble:	H07RN-F
Type de fiche câble:	CEE3P+N+PE
Câble principal:	1.5 m H05VV-F

Commandes:

Mode de fonctionnement:	S3-10%, 1 MIN.
-------------------------	----------------

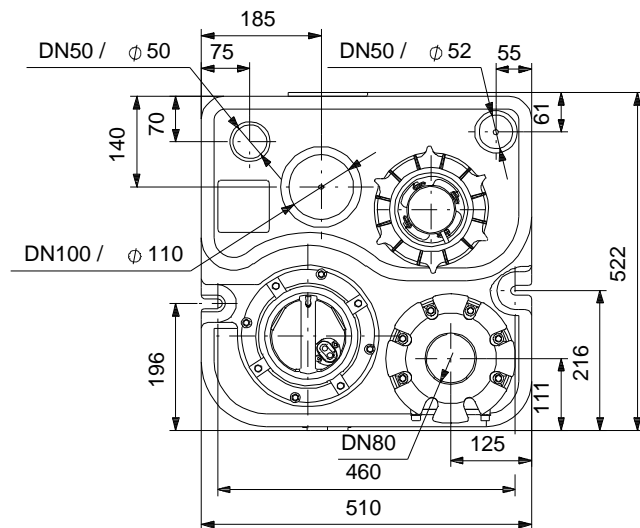
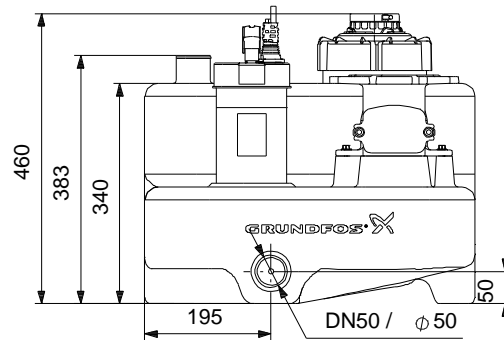
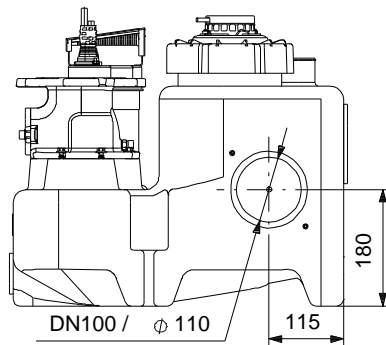
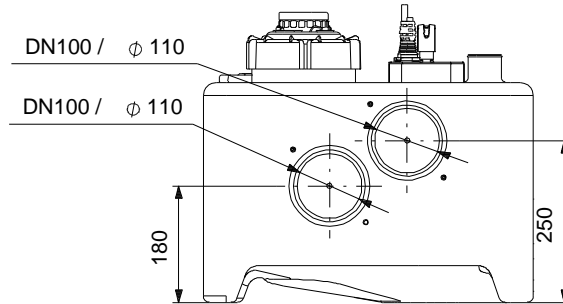
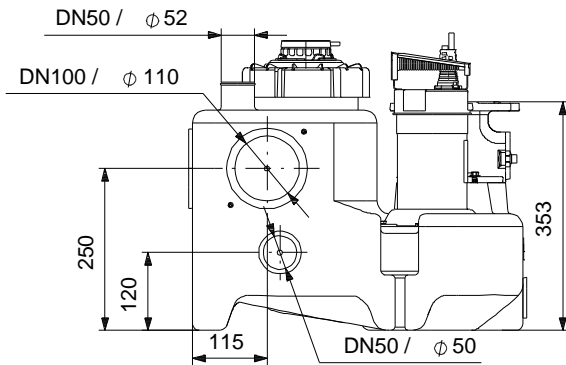
Réservoir:

Volume total du (des) réservoir(s):	44 l
Volume effectif total du réservoir avec entrée 20 l 180mm:	
Volume effectif total du réservoir avec entrée 28 l 250mm:	





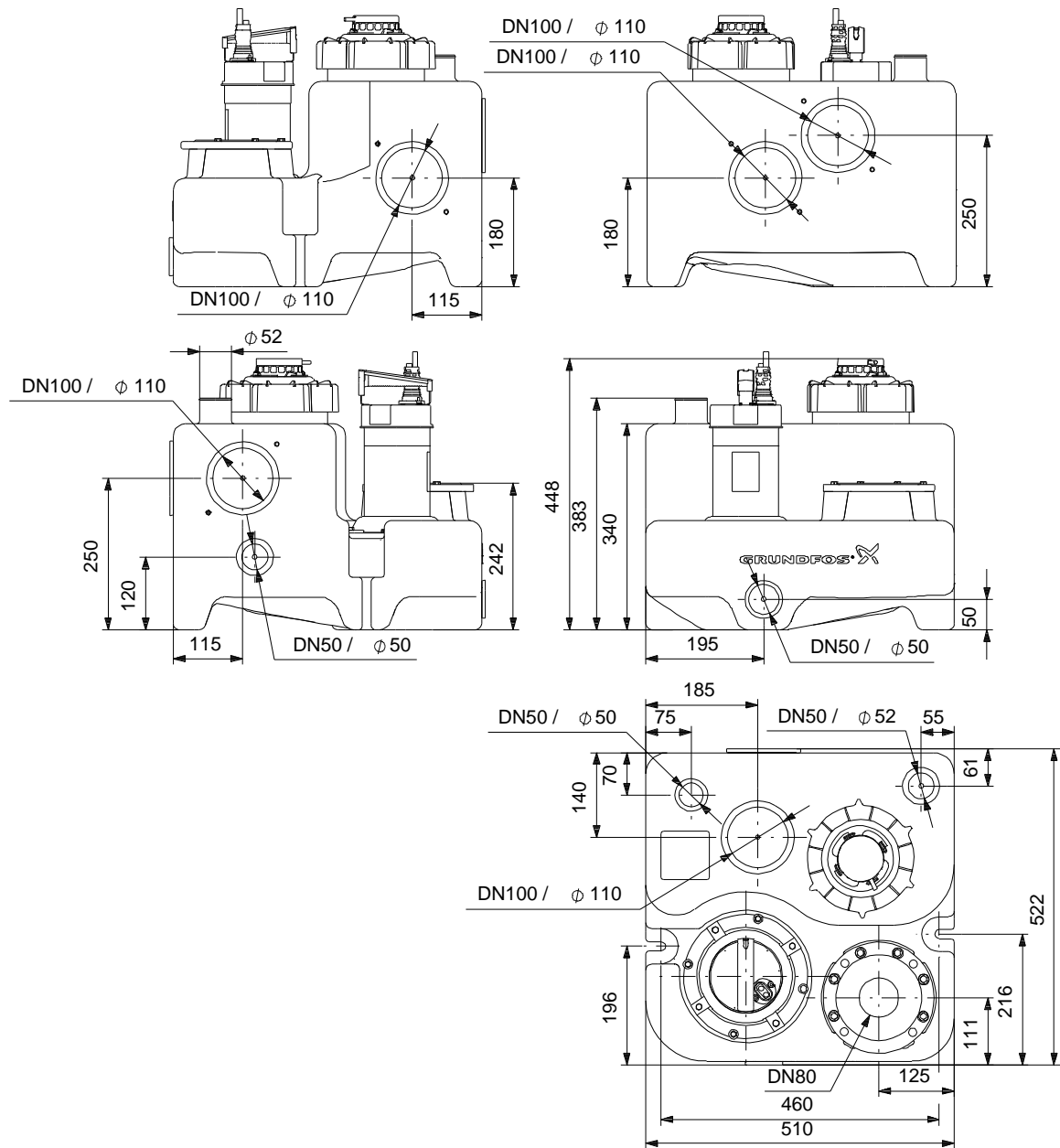
97901027 MSS.11.3.2 50 Hz



Remarque: toutes les unités sont en [mm] à moins que d'autres unités soient spécifiées.
 Mise en garde: ce dessin d'encombrement simplifié ne montre pas tous les détails.



97901027 MSS.11.3.2 50 Hz



Remarque: toutes les unités sont en [mm] à moins que d'autres unités soient spécifiées.
 Mise en garde: ce dessin d'encombrement simplifié ne montre pas tous les détails.