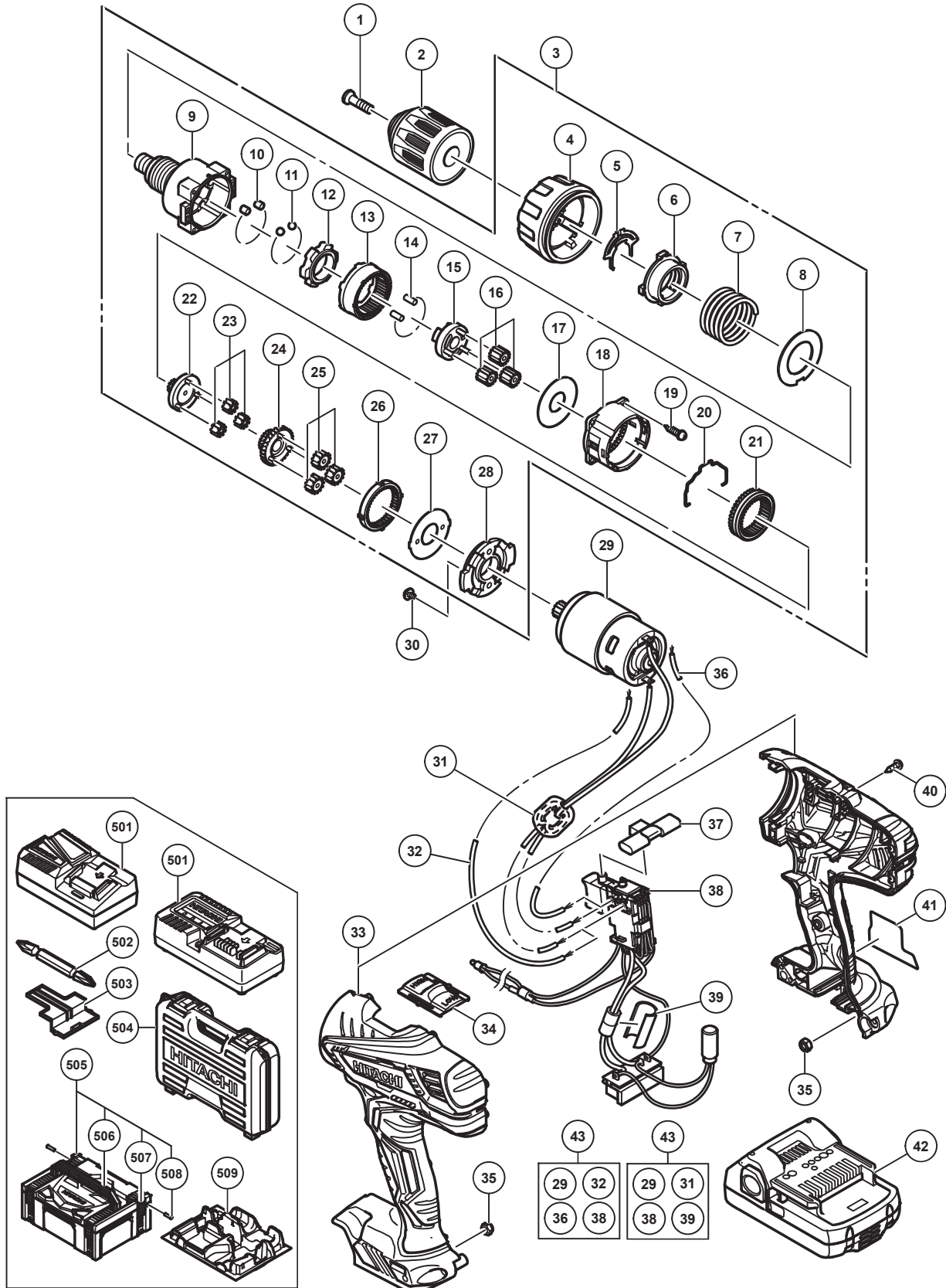


## ELECTRIC TOOL PARTS LIST

**CORDLESS DRIVER DRILL**  
**Model DS 18DJL**

**2014·4·4**  
**(E1)**



**PARTS**

DS 18DJL

ITEM NO.	CODE NO.	DESCRIPTION	NO. USED	REMARKS	
1	311959	SPECIAL SCREW (LEFT HAND) M6 X 23	1		
2	336852	DRILL CHUCK 13VLRW-N (W/O CHUCK WRENCH)	1		
3	337120	GEAR BOX ASS'Y	1	INCLUD.4-28	
4	337130	CLUTCH DIAL	1		
5	337129	CLICK SPRING	1		
6	337222	NUT	1		
7	337124	SPRING	1		
8	312714	WASHER (D)	1		
9	337121	FRONT CASE	1		
10	337123	ROLLER SET (6 PCS.)	6		
11	306936	STEEL BALL D5	6		
12	337125	LOCK RING	1		
13	312715	RING GEAR	1		
14	330806	NEEDLE ROLLER (A) SET (6 PCS.)	6		
15	337126	CARRIER	1		
16	312705	PLANET GEAR (C) SET (3 PCS.)	3		
17	312704	WASHER (A)	1		
18	335959	REAR CASE	1		
19	324357	SCREW SET D3 X 12 (4 PCS.)	4		
20	332017	SHIFT ARM	1		
21	332013	SLIDE RING GEAR	1		
22	337127	PINION (C)	1		
23	315816	PLANET GEAR (B) SET (3 PCS.)	3		
24	337128	PINION (B)	1		
25	337122	PLANET GEAR (A) SET (3 PCS.)	3		
26	332023	FIRST RING GEAR	1		
27	312716	WASHER (B)	1		
28	312698	MOTOR SPACER	1		
29	337115	MOTOR DC 18V	1		
30	317333	MACHINE SCREW (W/SP. WASHER) M4 X 6	2		
*	31	337136	INTERNAL WIRE FERRITE SET	1	FOR EUROPE,AUT,RUS,NOR,SWE, DEN,FIN,ISR,SAF,TUR
*	32	337117	INTERNAL WIRE (BLACK) 110L	1	FOR AUS,NZL,VIE,INA,SIN,THA, CHN,HKG,UAE,TPE,MAL,IND
	33	336851	HOUSING (A).(B) SET	1	
	34	336855	SHIFT KNOB	1	
	35	327002	LOCK NUT M4 (BLACK)	2	
*	36	324499	INTERNAL WIRE (RED) 140L	1	FOR AUS,NZL,VIE,INA,SIN,THA, CHN,HKG,UAE,TPE,MAL,IND
	37	336856	PUSHING BUTTON	1	
*	38	336632	SWITCH TERMINAL SET	1	
*	38	336630	SWITCH TERMINAL SET	1	FOR AUS,NZL,VIE,INA,SIN,THA, CHN,HKG,UAE,TPE,MAL,IND
*	39	337137	SUPPORT (D)	1	FOR EUROPE,AUT,RUS,NOR,SWE, DEN,FIN,ISR,SAF,TUR
	40	313687	TAPPING SCREW (W/FLANGE) D3 X 16 (BLACK)	9	
	41		NAME PLATE	1	
*	42	335788	BATTERY BSL 1825 (EUROPE,AUS,NZL)	2	INCLUD.503
*	42	333352	BATTERY BSL 1815 (EUROPE)	2	INCLUD.503
*	42	334726	BATTERY BSL 1815 (TPE)	2	INCLUD.503

**PARTS**

DS 18DJL

ITEM NO.	CODE NO.	DESCRIPTION	NO. USED	REMARKS
* 43	337135	WIRING ASS'Y	1	INCLUD.29,31,38,39
* 43	337133	WIRING ASS'Y	1	INCLUD.29,32,36,38 FOR AUS,NZL,VIE,INA, SIN,THA,CHN,HKG,UAE,TPE,MAL,IND

**STANDARD ACCESSORIES**

ITEM NO.	CODE NO.	DESCRIPTION	NO. USED	REMARKS
* 501		CHARGER (MODEL UC 18YFSL)	1	
* 501		CHARGER (MODEL UC 18YKSL)	1	
502	983006	+ DRIVER BIT NO.2 65L	1	
503	329897	BATTERY COVER	1	
504	336642	CASE	1	
505	336471	CASE ASS'Y (STACKABLE)	1	INCLUD.506-508
506	336473	HANDLE	1	
507	336472	LATCH	4	
508	336474	HINGE	2	
509	336475	INNER TRAY	1	

**OPTIONAL ACCESSORIES**

DS 18DJL

ITEM NO.	CODE NO.	DESCRIPTION	NO. USED	REMARKS	
601	955657	- DRIVER BIT (A) 3MM X 70L	1		
602	955659	- DRIVER BIT (A) 4MM X 70L	1		
603	955674	- DRIVER BIT (A) 6MM X 70L	1		
604	983004	+ DRIVER BIT NO.1 65L	1		
605	983011	+ DRIVER BIT NO.3 65L	1		