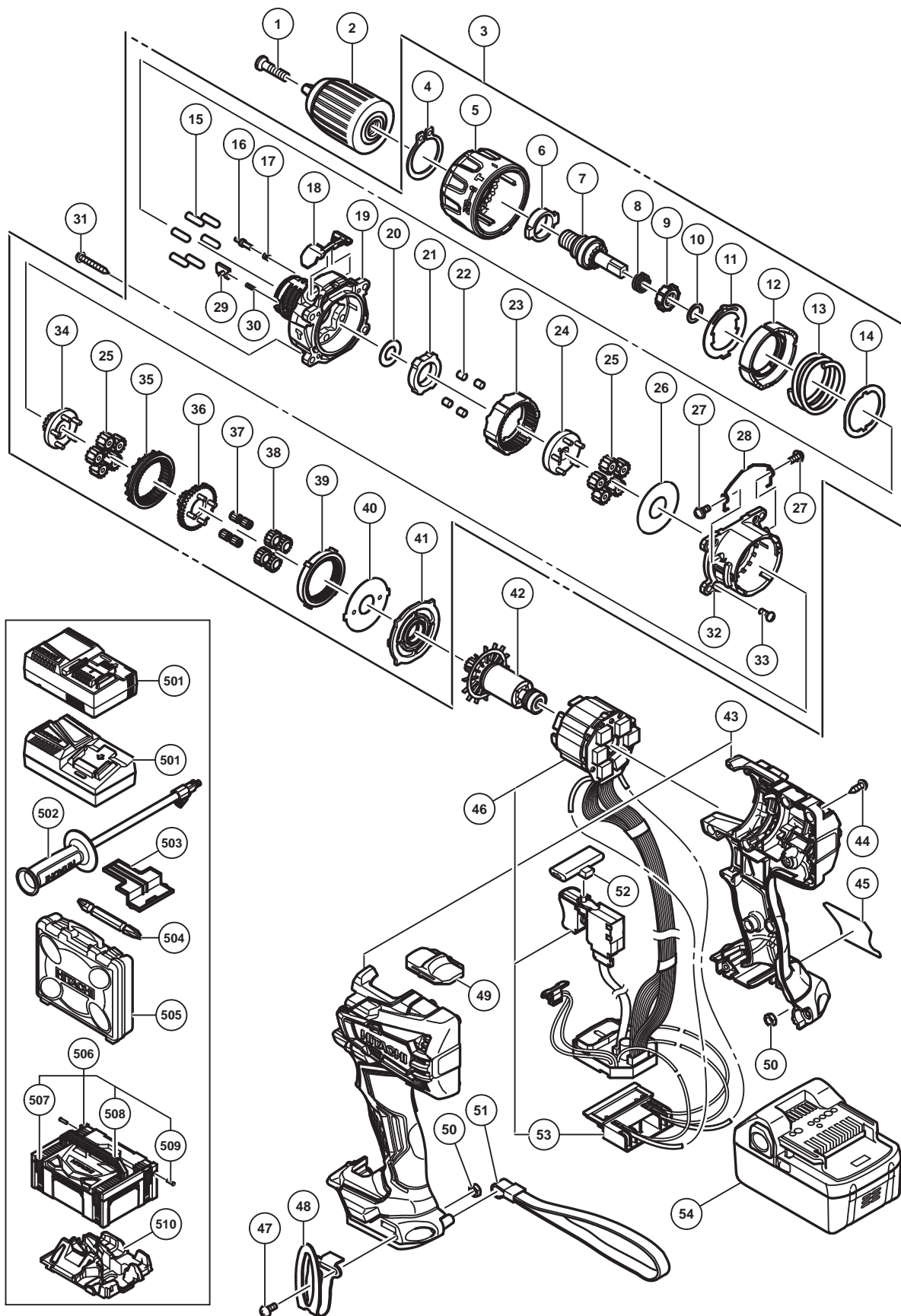


## ELECTRIC TOOL PARTS LIST

■ CORDLESS IMPACT DRIVER DRILL 2015-10-30  
Model DV 18DBL2 (E1)



**PARTS**

DV 18DBL2

ITEM NO.	CODE NO.	DESCRIPTION	NO. USED	REMARKS
1	995344	FLAT HD. SCREW (A) (LEFT HAND) M6 X 25	1	
* 2	339721	DRILL CHUCK 13VLRX-N	1	
* 2	339722	DRILL CHUCK 13VLRX-N (USA)	1	
3	339737	GEAR BOX ASS'Y	1	INCLUD.4-30,32-41
4	339736	RETAINING RING FOR D30 SHAFT	1	
5	339739	CLUTCH DIAL	1	
6	339741	METAL	1	
7	339742	SPINDLE	1	
8	327136	SPRING (C)	1	
9	339772	RATCHET (B)	1	
10	327147	WASHER (A)	1	
11	339744	CLICK SPRING	1	
12	339745	NUT	1	
13	339746	SPRING	1	
14	339747	THRUST PLATE	1	
15	333539	PIN SET (6 PCS.)	6	
16	339748	STOPPER	2	
17	331886	STOPPER SPRING	2	
18	339749	RUBBER CAP	1	
19	339750	FRONT CASE	1	
20	337411	WASHER (B)	1	
21	339752	LOCK RING	1	
22	319744	ROLLER	2	
23	339753	RING GEAR	1	
24	339754	CARRIER	1	
25	339774	PLANET GEAR (B) SET (5 PCS.)	10	
26	331892	WASHER (A)	1	
27	331895	SCREW SET D2 (2 PCS.)	2	
28	339755	SHIFT ARM	1	
29	339773	SLIP BLOCK	2	
30	327133	STOPPER SPRING	2	
31	305490	TAPPING SCREW (W/FLANGE) D4 X 30 (BLACK)	4	
32	339756	REAR CASE	1	
33	320087	SCREW SET M3 X 12 (4 PCS.)	4	
34	339757	PINION (C)	1	
35	339758	SLIDE RING GEAR	1	
36	339759	PINION (B)	1	
37	331926	NEEDLE BEARING SET (4 PCS.)	4	
38	334441	PLANET GEAR (A) SET (4 PCS.)	4	
39	339760	FIRST RING GEAR	1	
40	339761	WASHER (B)	1	
41	339762	MOTOR SPACER	1	
42	339763	ROTOR PINION SET	1	
43	339765	HOUSING (A). (B) SET	1	
44	313687	TAPPING SCREW (W/FLANGE) D3 X 16 (BLACK)	10	
45		NAME PLATE	1	
46	339766	WIRING ASS'Y	1	INCLUD.53
47	327001	TRUSS HD. SCREW M4 (BLACK)	1	
48	332824	HOOK	1	
49	334267	SHIFT KNOB	1	

**PARTS**

DV 18DBL2

ITEM NO.	CODE NO.	DESCRIPTION	NO. USED	REMARKS
50	327002	LOCK NUT M4 (BLACK)	2	
* 51	306952	STRAP (BLACK)	1	EXCEPT FOR USA,CAN
52	339768	PUSHING BUTTON	1	
53	339769	BATTERY TERMINAL	1	
* 54	338891	BATTERY BSL 1860 (EUROPE,AUS,NZL)	2	INCLUD.503
* 54	335790	BATTERY BSL 1850 (EUROPE,AUS,NZL)	2	INCLUD.503
* 54	335791	BATTERY BSL 1850 (USA,CAN)	2	INCLUD.503
* 54	336265	BATTERY BSL 1850 (CHN)	2	INCLUD.503
* 54	330068	BATTERY BSL 1830 (EUROPE,AUS,NZL)	2	INCLUD.503
* 54	334729	BATTERY BSL 1830 (TPE)	2	INCLUD.503
* 54	339190	BATTERY BSL 1825 (BRA)	2	INCLUD.503

**STANDARD ACCESSORIES**

ITEM NO.	CODE NO.	DESCRIPTION	NO. USED	REMARKS
* 501		CHARGER (MODEL UC 18YFSL)	1	
* 501		CHARGER (MODEL UC 18YSL3)	1	
502	339770	SIDE HANDLE	1	
* 503	329897	BATTERY COVER	1	
504	983006	+ DRIVER BIT NO.2 65L	1	
* 505	339778	CASE	1	
* 506	336471	CASE ASS'Y (STACKABLE)	1	INCLUD.507-509
* 507	336472	LATCH	4	
* 508	336473	HANDLE	1	
* 509	336474	HINGE	2	
* 510	339776	INNER TRAY	1	

**OPTIONAL ACCESSORIES**

ITEM NO.	CODE NO.	DESCRIPTION	NO. USED	REMARKS
601	955657	- DRIVER BIT (A) 3MM X 70L	1	
602	955659	- DRIVER BIT (A) 4MM X 70L	1	
603	955674	- DRIVER BIT (A) 6MM X 70L	1	
604	983004	+ DRIVER BIT NO.1 65L	1	
605	983011	+ DRIVER BIT NO.3 65L	1	
* 606	303709	DEPTH GAUGE	1	
* 606	310331	DEPTH GAUGE	1	FOR USA,CAN
607	306927	SILICONE RUBBER	1	