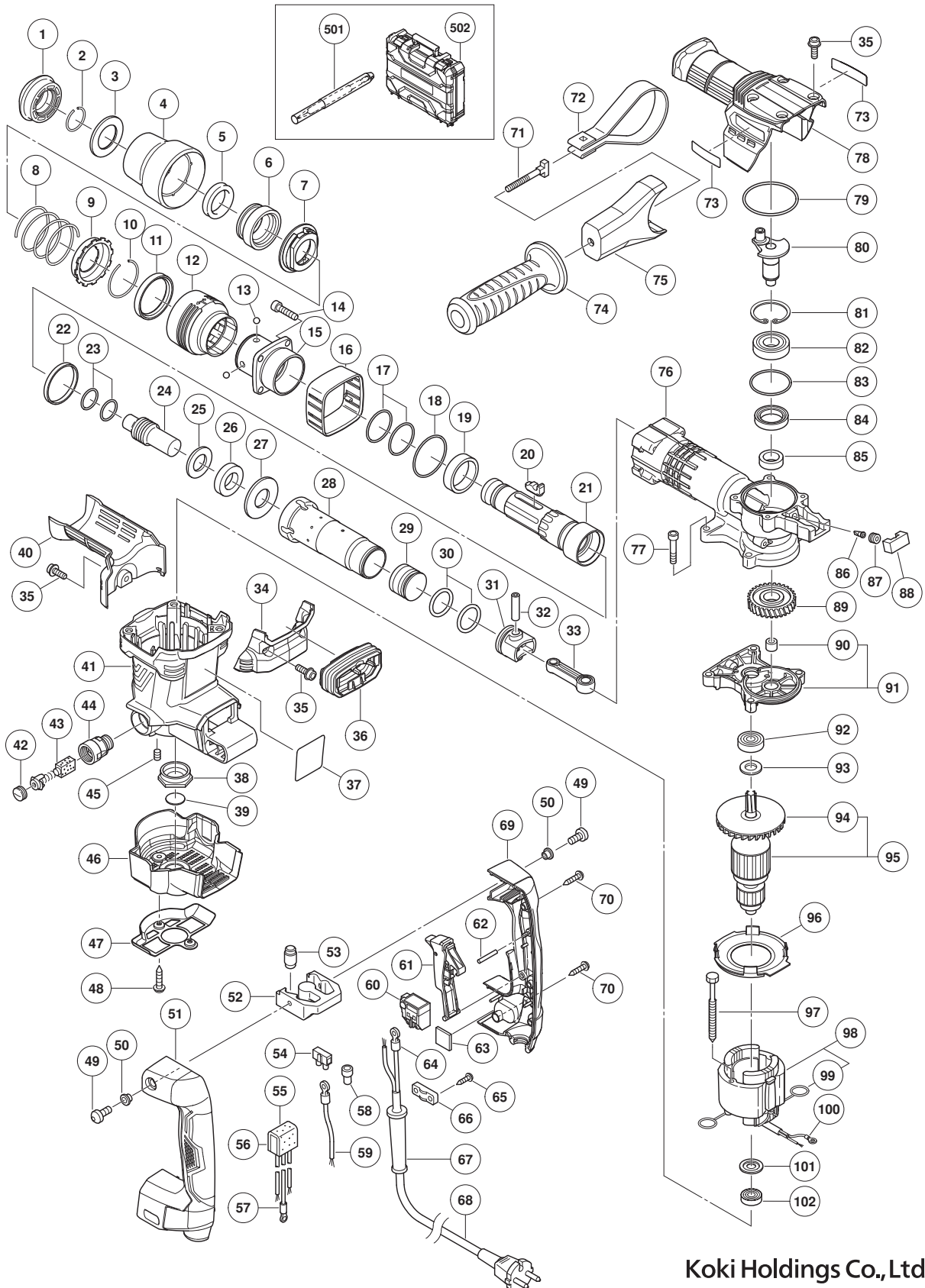


ELECTRIC TOOL PARTS LIST

DEMOLITION HAMMER Model H 41MB2

2018·10·22
(E1)



PARTS

H 41MB2

| ITEM NO. | CODE NO. | DESCRIPTION | NO. USED | REMARKS |
|----------|----------|--|----------|--------------|
| 1 | 337562 | FRONT CAP | 1 | |
| 2 | 318590 | STOPPER RING | 1 | |
| 3 | 370172 | RETAINER WASHER | 1 | |
| 4 | 370173 | GRIP | 1 | |
| 5 | 337559 | RETAINER DAMPER (A) | 1 | |
| 6 | 337558 | BIT LOCK HOLDER | 1 | |
| 7 | 370242 | SPRING HOLDER (A) | 1 | |
| 8 | 370243 | RETAINER SPRING | 1 | |
| 9 | 370244 | SPRING HOLDER (B) | 1 | |
| 10 | 333255 | STOPPER RING | 1 | |
| 11 | 373288 | BALL HOLDER | 1 | |
| 12 | 373279 | GRIP (B) | 1 | |
| 13 | 959150 | STEEL BALL D6.35 (10 PCS.) | 4 | |
| 14 | 981942 | SEAL LOCK HEX. SOCKET HD. BOLT M6 X 25 | 4 | |
| 15 | 373280 | FRONT COVER | 1 | |
| 16 | 373236 | TOP COVER | 1 | |
| 17 | 980879 | O-RING (S-34) | 2 | |
| 18 | 373251 | O-RING (I.D 44.5) | 1 | |
| 19 | 373281 | RETAINER DAMPER (B) | 1 | |
| 20 | 370654 | BIT LOCK | 2 | |
| 21 | 373284 | RETAINER SLEEVE | 1 | |
| 22 | 373249 | DAMPER (C) | 1 | |
| 23 | 313396 | O-RING (C) | 2 | |
| 24 | 373285 | SECOND HAMMER | 1 | |
| 25 | 373286 | DAMPER WASHER | 1 | |
| 26 | 321289 | DAMPER | 1 | |
| 27 | 373287 | DAMPER HOLDER | 1 | |
| 28 | 374774 | CYLINDER | 1 | |
| 29 | 373283 | STRIKER | 1 | |
| 30 | 320823 | O-RING | 2 | |
| 31 | 320824 | PISTON | 1 | |
| 32 | 373256 | PISTON PIN | 1 | |
| 33 | 373275 | CONNECTING ROD | 1 | |
| 34 | 373237 | BACK COVER | 1 | |
| 35 | 998485 | HEX. SOCKET HD. BOLT (W/FLANGE) M5 X 14 | 7 | |
| 36 | 373252 | BELLOWS | 1 | |
| 37 | | NAME PLATE | 1 | |
| 38 | 310111 | BEARING BUSHING (B) | 1 | |
| 39 | 333263 | DUST SEAL | 1 | |
| 40 | 373234 | HOOD | 1 | |
| 41 | 373276 | HOUSING ASS'Y | 1 | INCLUD.44,45 |
| 42 | 945161 | BRUSH CAP | 2 | |
| 43 | 999043 | CARBON BRUSH (1 PAIR) | 1 | |
| 43 | 999073 | CARBON BRUSH (AUTO STOP TYPE) (1 PAIR) | 1 | |
| 44 | 958900 | BRUSH HOLDER | 2 | |
| 45 | 938477 | HEX. SOCKET SET SCREW M5 X 8 | 2 | |
| 46 | 373239 | TAIL COVER | 1 | |
| 47 | 373248 | PLATE | 1 | |
| 48 | 301653 | TAPPING SCREW (W/FLANGE) D4 X 20 (BLACK) | 2 | |
| 49 | 373263 | SEAL LOCK BUTTON BOLT M5 | 2 | |

PARTS

H 41MB2

| ITEM NO. | CODE NO. | DESCRIPTION | NO. USED | REMARKS |
|----------|----------|--|----------|---|
| 50 | 991711 | DISTANCE PIECE (B) | 2 | |
| 51 | 373242 | HANDLE (A) | 1 | |
| 52 | 373231 | TRANSATORY UNIT | 1 | |
| 53 | 310124 | HANDLE DAMPER | 4 | |
| * 54 | 938307 | PILLAR TERMINAL | 1 | FOR EUROPE,GBR,AUS,NZL,SAF,RUS,CHN,USA, MEX,PAN (120V) |
| * 55 | 317492 | SUPPORT (B) | 1 | FOR EUROPE,GBR,AUS,NZL,SAF,RUS,CHN |
| * 56 | 374463 | NOISE SUPPRESSOR (V) | 1 | INCLUD.55 FOR EUROPE,GBR,AUS,NZL,SAF, RUS,CHN |
| * 57 | 961419Z | TERMINAL | 1 | FOR EUROPE,GBR,AUS,NZL,SAF,RUS,CHN |
| * 58 | 959141 | CONNECTOR 50092 (10 PCS.) | 1 | EXCEPT FOR USA,MEX,PAN (120V) |
| * 59 | 981974 | INTERNAL WIRE | 1 | FOR EUROPE,GBR,AUS,NZL,SAF,RUS,CHN |
| 60 | 371171 | SWITCH | 1 | |
| 61 | 373241 | TRIGGER | 1 | |
| 62 | 949890 | PIN D3 X 20 (10 PCS.) | 1 | |
| 63 | 374462 | CUSHION RUBBER | 2 | |
| * 64 | 980063 | TERMINAL | 1 | |
| * 64 | 930804 | TERMINAL M4.0 (10 PCS.) | 1 | FOR USA,MEX,PAN (120V) |
| 65 | 984750 | TAPPING SCREW (W/FLANGE) D4 X 16 | 2 | |
| 66 | 960266 | CORD CLIP | 1 | |
| * 67 | 958049 | CORD ARMOR D8.2 | 1 | |
| * 67 | 940778 | CORD ARMOR D10.7 | 1 | |
| * 68 | 500390Z | CORD | 1 | (CORD ARMOR D8.2) |
| * 68 | 500235Z | CORD | 1 | (CORD ARMOR D8.2) FOR INA,IND,PAN (220V) |
| * 68 | 500434Z | CORD | 1 | (CORD ARMOR D8.2) FOR USA,MEX,PAN (120V) |
| * 68 | 500408Z | CORD | 1 | (CORD ARMOR D8.2) FOR AUS,NZL |
| * 68 | 500446Z | CORD | 1 | (CORD ARMOR D8.2) FOR GBR(230V),UAE(230V) |
| * 68 | 500465Z | CORD | 1 | (CORD ARMOR D8.2) FOR GBR (110V) |
| * 68 | 500457Z | CORD | 1 | (CORD ARMOR D10.7) FOR CHN |
| * 68 | 500477Z | CORD | 1 | (CORD ARMOR D10.7) FOR UAE (110V) |
| 69 | 373243 | HANDLE (B) | 1 | |
| 70 | 301653 | TAPPING SCREW (W/FLANGE) D4 X 20 (BLACK) | 4 | |
| 71 | 331247 | HANDLE BOLT | 1 | |
| 72 | 373245 | BAND | 1 | |
| 73 | | BRAND LABEL | 2 | |
| 74 | 330209 | SIDE HANDLE | 1 | |
| 75 | 373244 | MOUNT | 1 | |
| 76 | 373289 | CYLINDER CRANK CASE ASS'Y | 1 | INCLUD.86,87 |
| 77 | 322494 | SEAL LOCK HEX. SOCKET HD. BOLT M6 X 40 | 4 | |
| 78 | 374474 | CRANK COVER | 1 | |
| 79 | 373250 | O-RING (I.D 53.9) | 1 | |
| 80 | 373246 | CRANK SHAFT | 1 | |
| 81 | 948391 | RETAINING RING FOR D40 HOLE | 1 | |
| 82 | 6203DD | BALL BEARING 6203DDCMPS2L | 1 | |
| 83 | 996363 | O-RING (S-40) | 1 | |
| 84 | 310119 | OIL SEAL | 1 | |
| 85 | 373254 | DISTANCE RING | 1 | |
| 86 | 995396 | VALVE | 1 | |
| 87 | 338313 | CAP SCREW | 1 | |
| 88 | 374461 | FELT | 1 | |

