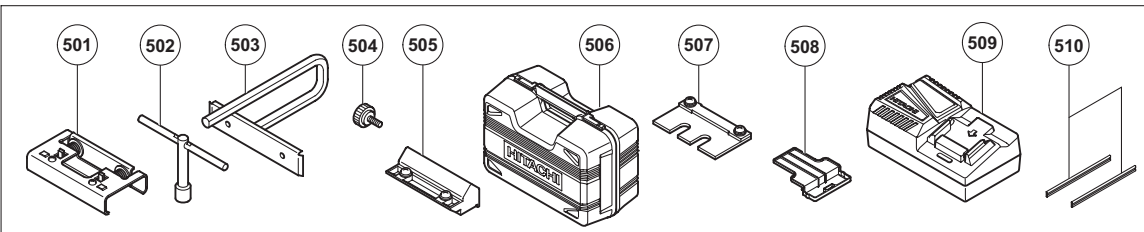
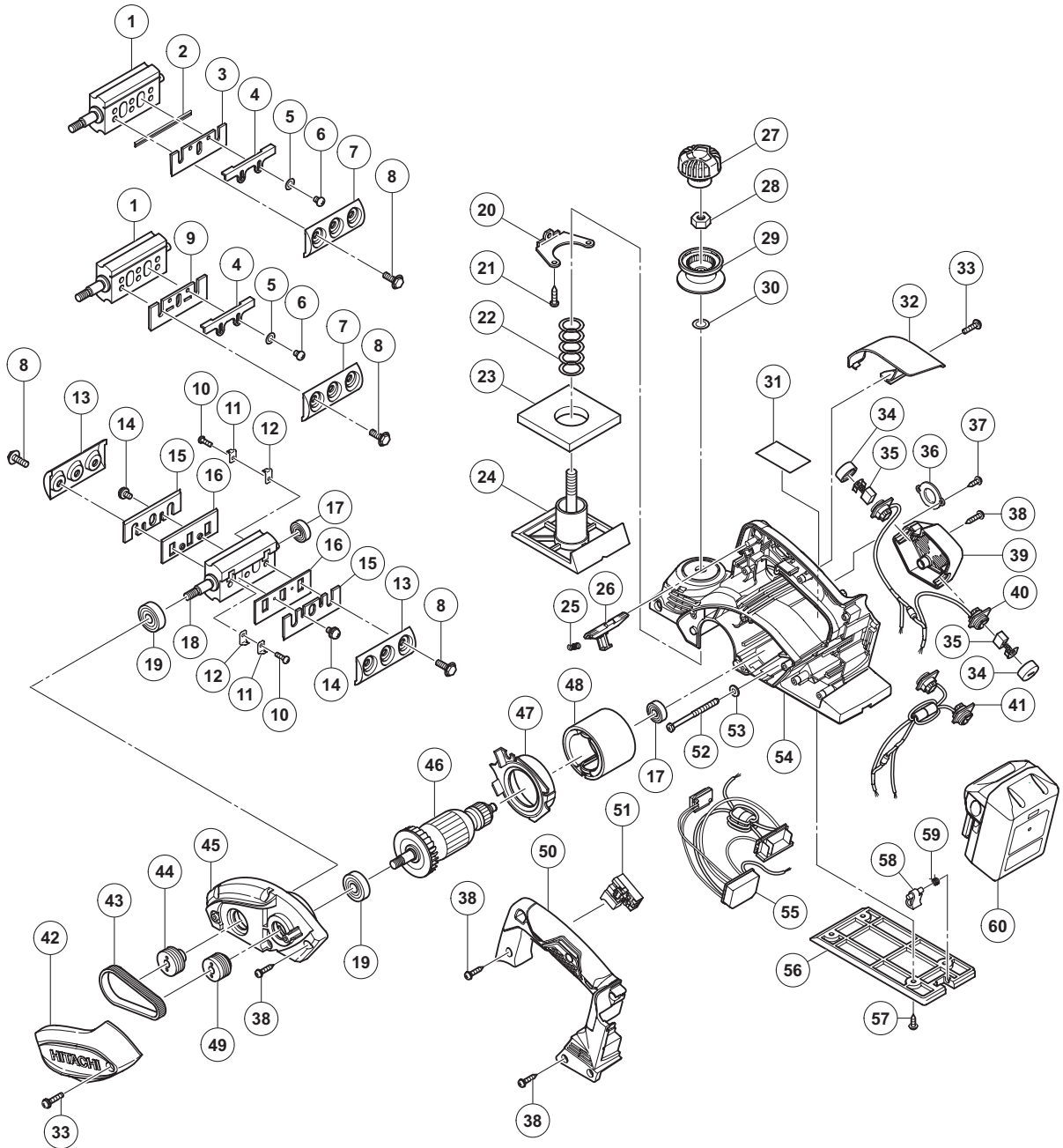


## ELECTRIC TOOL PARTS LIST

### CORDLESS PLANER Model P 18DSL

2014·1·30  
(E1)



**PARTS**

P 18DSL

ITEM NO.	CODE NO.	DESCRIPTION	NO. USED	REMARKS	
*	1	334480	CUTTER BLOCK ASS'Y (W/B.B)	1	INCLUD.17,19 EXCEPT FOR IND
*	2	879418	PLANER BLADES (1 PAIR)	2	FOR DOUBLE EDGE BLADE TYPE
*	3	334478	SET PLATE (B) (1 PAIR)	2	FOR DOUBLE EDGE BLADE TYPE
*	4	314754	SET PLATE (A)	2	EXCEPT FOR IND
*	5	949423	WASHER M4 (10 PCS.)	4	EXCEPT FOR IND
*	6	949213	MACHINE SCREW M4 X 5 (10 PCS.)	4	EXCEPT FOR IND
*	7	316398	BLADE HOLDER (1 PAIR)	2	EXCEPT FOR IND
	8	336574	BOLT M6	6	
*	9	314746	PLANER BLADES 82MM (1 PAIR)	2	EXCEPT FOR DOUBLE EDGE BLADE TYPE
*	10	949216	MACHINE SCREW M4 X 10 (10 PCS.)	4	EXCEPT FOR DOUBLE EDGE BLADE TYPE FOR IND
*	11	958731Z	HOLDER SPRING (B)	4	EXCEPT FOR DOUBLE EDGE BLADE TYPE FOR IND
*	12	958732Z	GUARD PLATE (A)	4	EXCEPT FOR DOUBLE EDGE BLADE TYPE FOR IND
*	13	958734Z	BLADE HOLDER (1 PAIR)	2	EXCEPT FOR DOUBLE EDGE BLADE TYPE FOR IND
*	14	976815	MACHINE SCREW (W/WASHERS) M4 X 8	4	EXCEPT FOR DOUBLE EDGE BLADE TYPE FOR IND
*	15	958728	PLANER BLADES 82MM (1 PAIR)	2	EXCEPT FOR DOUBLE EDGE BLADE TYPE FOR IND
*	16	958733Z	BACK METAL	2	EXCEPT FOR DOUBLE EDGE BLADE TYPE FOR IND
	17	608VVM	BALL BEARING 608VVC2PS2L	2	
*	18	334481	CUTTER BLOCK ASS'Y (W/B.B)	1	INCLUD.10-12,17,19 EXCEPT FOR DOUBLE EDGE BLADE TYPE FOR IND
	19	6200VV	BALL BEARING 6200VVCMP2L	2	
	20	958945	SCREW PLATE	1	
	21	954004	TAPPING SCREW D4 X 16	1	
	22	958709	SPRING	1	
	23	958708	RUBBER PACKING	1	
	24	334739	FRONT BASE	1	
	25	301631	SPRING (F)	1	
	26	336481	KNOB	1	
	27	334494	KNOB (A)	1	
	28	334497	LOCK NUT M10	1	
*	29	336486	KNOB (B)	1	
*	29	336487	KNOB (B)	1	FOR USA,CAN
	30	301659	WASHER (B)	1	
	31		NAME PLATE	1	
	32	334501	TIP COVER	1	
	33	333163	MACHINE SCREW (BLACK) M4 X 16	3	
	34	336490	BRUSH CAP	2	
	35	999017	CARBON BRUSH (1 PAIR)	2	
	36	334492	BEARING COVER	1	
	37	309470	TAPPING SCREW (W/FLANGE) D4 X 12 (BLACK)	2	
	38	301653	TAPPING SCREW (W/FLANGE) D4 X 20 (BLACK)	11	
	39	336485	TAIL COVER	1	
	40	336576	BRUSH HOLDER	1	
*	41	336577	BRUSH HOLDER (W/FERRITE CORE)	1	FOR EUROPE,GBR,FRA,TUR,NOR,SWE,DEN,FIN,KOR
	42	336575	BELT COVER	1	
	43	958718	BELT	1	
	44	336489	PULLEY (B)	1	
	45	334486	END BRACKET	1	
	46	360969	ARMATURE DC 18V	1	
	47	334493	FAN GUIDE	1	
	48	319846	MAGNET	1	

**PARTS**

P 18DSL

ITEM NO.	CODE NO.	DESCRIPTION	NO. USED	REMARKS	
49	336488	PULLEY (A)	1		
50	336484	HANDLE COVER	1		
51	319825	SWITCH (1P SCREW TYPE) W/O LOCK	1		
52	960108	HEX. HD. TAPPING SCREW D4 X 60	2		
53	319290	WASHER	2		
54	336482	HOUSING	1		
* 55	336479	CONTROLLER TERMINAL SET	1		
* 55	336480	CONTROLLER TERMINAL SET (W/FERRITE CORE)	1	FOR EUROPE,GBR,FRA,TUR,NOR,SWE,DEN,FIN,KOR	
56	334838	REAR BASE	1		
57	307811	TAPPING SCREW (W/FLANGE) D4 X 16 (BLACK)	4		
58	334499	STAND	1		
59	334500	SPRING	1		
* 60	335311	BATTERY BSL 1830 (BRA)	2	INCLUD.508	
* 60	330068	BATTERY BSL 1830 (EUROPE,AUS,NZL)	2	INCLUD.508	
* 60	334905	BATTERY BSL 1830 (KOR)	2	INCLUD.508	
* 60	334729	BATTERY BSL 1830 (TPE)	2	INCLUD.508	
* 60	336385	BATTERY BSL 1850 (EUROPE,AUS,NZL)(2 PCS.)	2	INCLUD.508	
* 60	335791	BATTERY BSL 1850 (USA,CAN)	2	INCLUD.508	

**STANDARD ACCESSORIES**

P 18DSL

ITEM NO.	CODE NO.	DESCRIPTION	NO. USED	REMARKS
* 501	334693	SET GAUGE	1	FOR IND
502	940543	BOX WRENCH 10MM	1	
503	958842Z	GUIDE	1	
504	940650	STOPPER SCREW M5 X 14	1	
* 505	314767	BLADE SHARPENING ASS'Y	1	EXCEPT FOR DOUBLE EDGE BLADE TYPE
506	336491	CASE	1	
* 507	316419	SET GAUGE	1	EXCEPT FOR IND
508	329897	BATTERY COVER	1	
509		CHARGER (MODEL UC 18YFSL)	1	
* 510	336571	PLANER BLADES (1 PAIR)	2	FOR AUS,FRA

**OPTIONAL ACCESSORIES**

ITEM NO.	CODE NO.	DESCRIPTION	NO. USED	REMARKS
601	334502	DUST ADAPTER	1	
602	334503	ELBOW	1	
603	322955	DUST BAG (BLACK)	1	