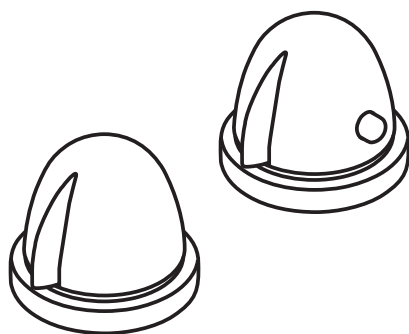
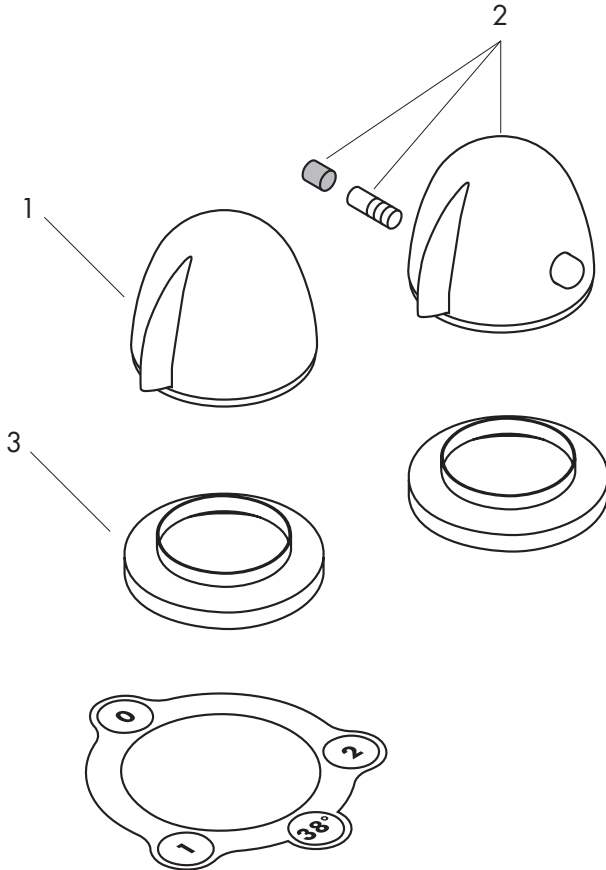
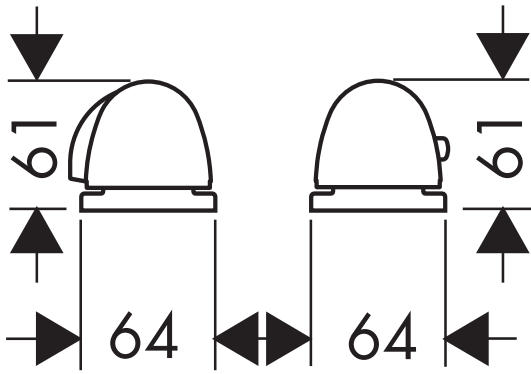


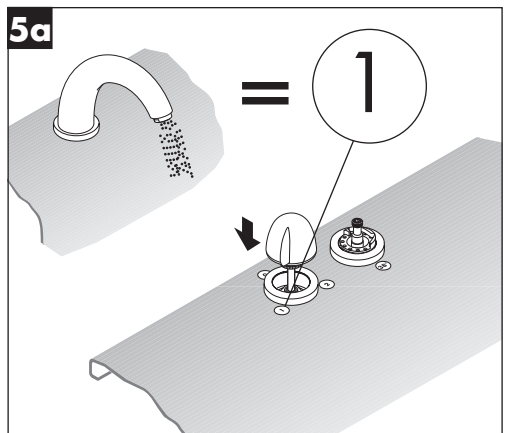
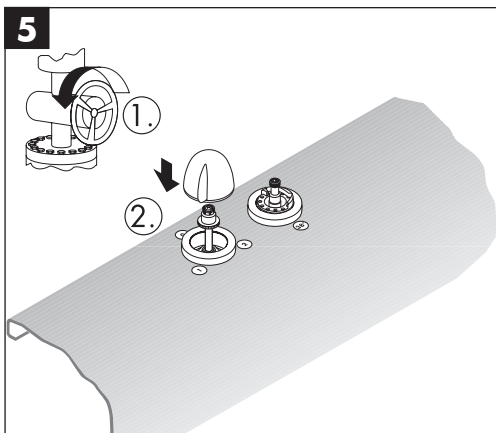
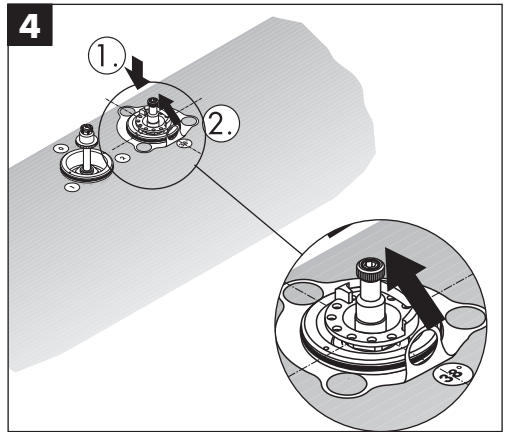
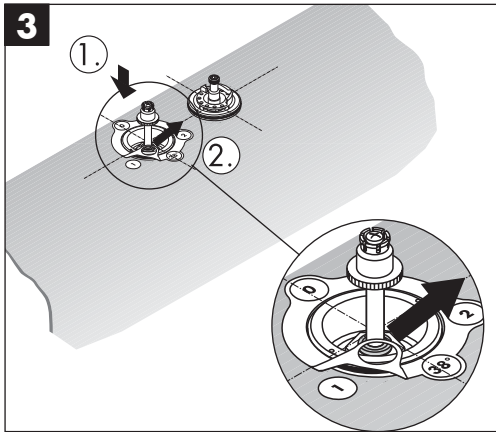
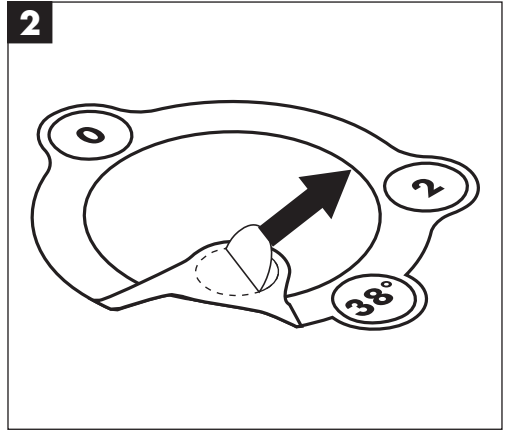
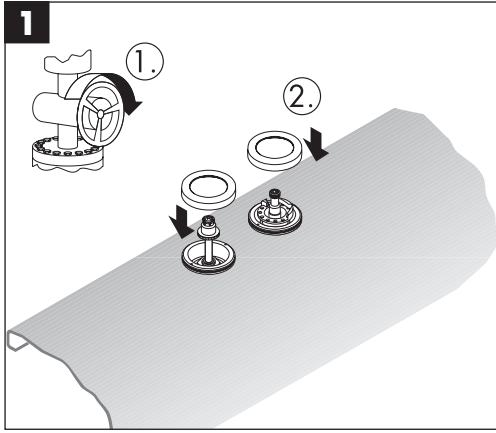
Montageanleitung

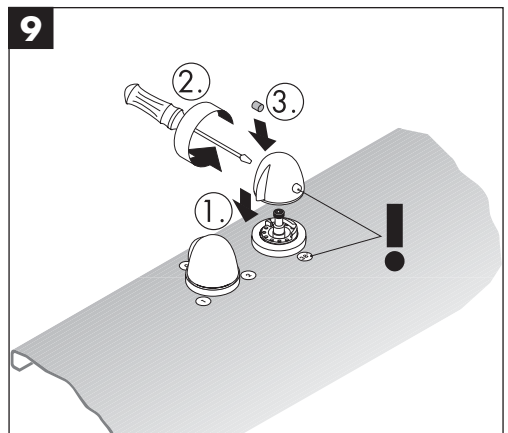
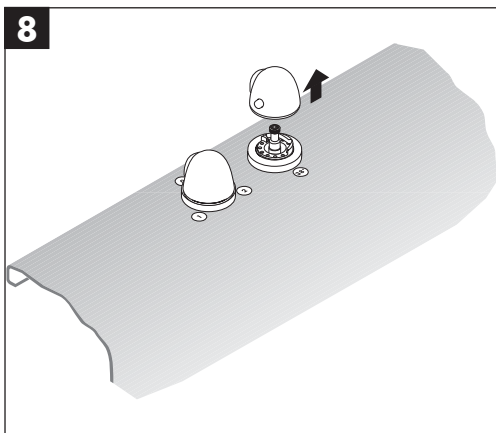
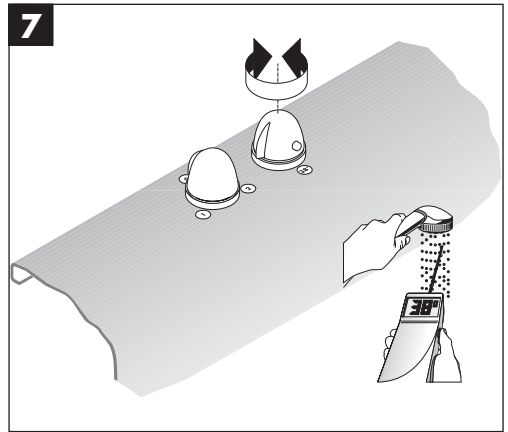
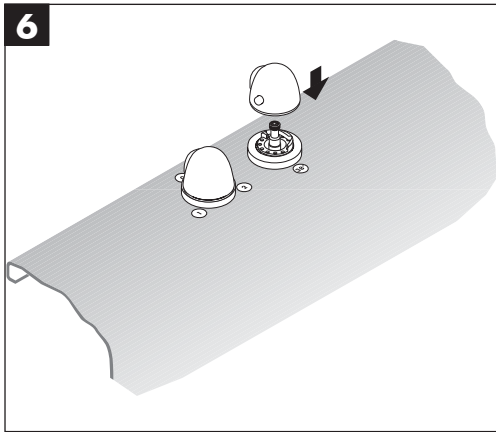
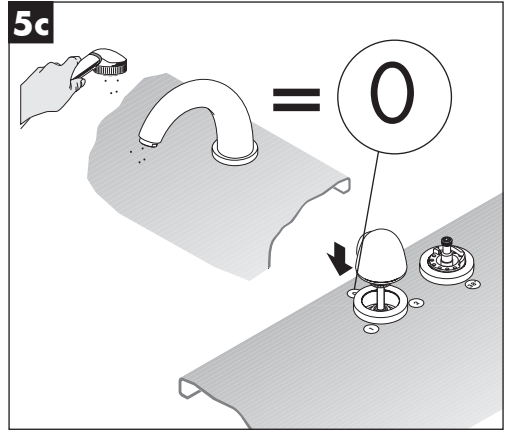
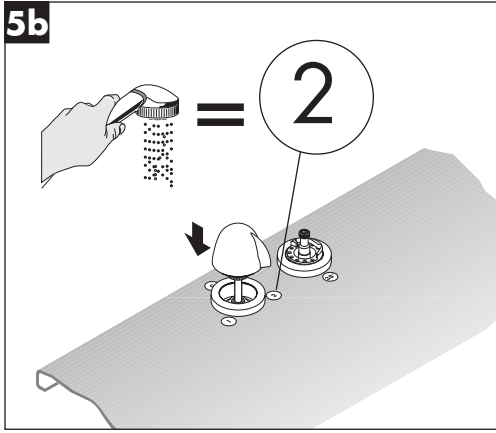


**Mondial/Metropol/Metris/
Talis Sportive/Talis Elegance**
15450XXX

hansgrohe







Deutsch

Montage

Achtung! Die Armatur muss nach den gültigen Normen montiert, gespült und geprüft werden.

Technische Daten

Prüfzeichen: P-IX 9653/ICC

Serviceteile (siehe Seite 2)

1	Griff „Quattro“	36993XXX
2	Thermostatgriff	36393XXX
3	Rosette	21828XXX

XXX = Farbcodierung

000	chrom
090	chrom / gold
810	satinox®
880	edelmatt

English

Assembly

Important! The fitting must be installed, flushed and tested after the valid norms.

Spare parts (see page 2)

1	Quattro handle	36993XXX
2	handle for thermostat	36393XXX
3	escutcheon	21828XXX

XXX = Colors

000	chrome plated
090	chrome plated/gold plated
810	satinox®
880	satın chrome

Français

Montage

Attention: La robinetterie doit être installée, rincée et contrôlée conformément aux normes valables.

Pièces détachées (voir pages 2)

1	poignée „Quattro“	36993XXX
2	poignée thermostatique	36393XXX
3	rosace	21828XXX

XXX = Couleurs

000	chromé
090	chromé/or
810	satinox®
880	chromé mat

Italiano

Montaggio

Attenzione: la rubinetteria deve essere installata, pulita e testata secondo le istruzioni riportate!

Parti di ricambio (vedi pagg. 2)

1	manopola „Quattro“	36993XXX
2	manopola termostatico	36393XXX
3	copertura	21828XXX

XXX = Trattamento

000	cromato
090	cromato/oro
810	satinox®
880	satinato

Español

Montaje

¡ATENCIÓN! ¡ El grifo tiene que ser instalado, probado y testado, según las normas en vigor.

Repuestos (ver página 2)

1	Mando para „Quattro“	36993XXX
2	Mando del termostato	36393XXX
3	Embellecedor mezclador	21828XXX

XXX = Acabados

000	cromado
090	cromado/oro
810	satinox®
880	atinado

Dansk

Montering

Advarsel! Ifølge gældende regler, skal armaturet monteres, skylles igennem og afprøves.

Reserve dele (se s. 2)

1	Greb „Quattro“	36993XXX
2	Skalagreb	36393XXX
3	Roset	21828XXX

XXX = Overflade

000	Krom
090	Krom/guld
810	Satinox®
880	Matkrom

Nederlands

Montage

Attentie! Leidingen doorspoelen volgens Norm. De mengkraan vervolgens monteren en controleren.

Service onderdelen (zie pag. 2)

1	greep „Quattro“	36993XXX
2	thermostaatgreep	36393XXX
3	rozet	21828XXX

XXX = Kleuren

000	verchromd
090	verchromd/verguld
810	satinox®
880	mat

Português

Montagem

Atenção! A misturadora deve ser instalada, purgada e testada de acordo com as normas em vigor.

Peças de substituição (ver página 2)

1	manípulo „Quattro“	36993XXX
2	manípulo	36393XXX
3	espelho	21828XXX

XXX = Acabamentos

000	cromado
090	cromado/ouro
810	satinox®
880	cromado mate

Polski

Montaż

Uwaga! Armatura musi być zamontowana, przepłukana i wypróbowana według obowiązujących norm.

Części serwisowe (zobacz str. 2)

1	Griff „Quattro“	36993XXX
2	Thermostatgriff	36393XXX
3	Rosette	21828XXX

XXX = kody wykończenia powierzchni

000	chrom
090	chrom / gold
810	satinox®
880	edelmatt

hansgrohe

AXOR | PHÂRO

Hansgrohe · Postfach 1145 · D-77761 Schiltach · Telefon +49 (0) 78 36/51-1282 · Telefax +49 (0) 7836/511440
E-Mail: info@hansgrohe.com · Internet: www.hansgrohe.com

07/2005
9.09275.01